

Pat Harrison Waterway District

17 J M Tatum Industrial Drive, Suite 120

Hiram Boone

AGENCY

ADDRESS

CHIEF EXECUTIVE OFFICER

	Actual Expenses June 30,2021	Estimated Expenses June 30,2022	Requested For June 30,2023	Requested Over/(Under) Estimated	
				AMOUNT	PERCENT
I. A. PERSONAL SERVICES					
1. Salaries, Wages & Fringe Benefits (Base)	1,530,582	1,712,669	1,712,669		
a. Additional Compensation					
b. Proposed Vacancy Rate (Dollar Amount)			650,354		
c. Per Diem	12,080	25,644	25,644		
Total Salaries, Wages & Fringe Benefits	1,542,662	1,738,313	1,087,959	(650,354)	(37.41%)
2. Travel					
a. Travel & Subsistence (In-State)	22,457	38,310	38,310		
b. Travel & Subsistence (Out-Of-State)		3,000	3,000		
c. Travel & Subsistence (Out-Of-Country)					
Total Travel	22,457	41,310	41,310		
B. CONTRACTUAL SERVICE S (Schedule B)					
a. Tuition, Rewards & Awards	4,288	2,605	2,605		
b. Communications, Transportation & Utilities	658,303	741,333	741,333		
c. Public Information	36,552	14,865	14,865		
d. Rents	6,741	17,643	17,643		
e. Repairs & Service	45,561	585,329	585,329		
f. Fees, Professional & Other Services	815,059	359,875	359,875		
g. Other Contractual Services	85,920	214,087	214,087		
h. Data Processing	25,400	8,072	8,072		
i. Other	62,563	56,191	56,191		
Total Contractual Services	1,740,387	2,000,000	2,000,000		
C. COMMODITIES (Schedule C)					
a. Maintenance & Construction Materials & Supplies	25,798	25,063	25,063		
b. Printing & Office Supplies & Materials	19,668	12,696	12,696		
c. Equipment, Repair Parts, Supplies & Accessories	228,445	173,661	173,661		
d. Professional & Scientific Supplies & Materials		5,794	5,794		
e. Other Supplies & Materials	304,393	467,390	467,390		
Total Commodities	578,304	684,604	684,604		
D. CAPITAL OUTLAY					
1. Total Other Than Equipment (Schedule D-1)	47,442	150,000	650,000	500,000	333.33%
2. Equipment (Schedule D-2)					
b. Road Machinery, Farm & Other Working Equipment					
c. Office Machines, Furniture, Fixtures & Equipment	11,438	15,298	15,298		
d. IS Equipment (Data Processing & Telecommunications)		9,545	9,545		
e. Equipment - Lease Purchase					
f. Other Equipment	5,857	132,621	132,621		
Total Equipment (Schedule D-2)	17,295	157,464	157,464		
3. Vehicles (Schedule D-3)	72,270				
4. Wireless Comm. Devices (Schedule D-4)					
E. SUBSIDIES, LOANS & GRANTS (Schedule E)	413,281	953,960	953,960		
TOTAL EXPENDITURES	4,434,098	5,725,651	5,575,297	(150,354)	(2.63%)
II. BUDGET TO BE FUNDED AS FOLLOWS:					
Cash Balance-Unencumbered	10,744,519	10,744,519	10,744,519		
General Fund Appropriation (Enter General Fund Lapse Below)					
State Support Special Funds					
Federal Funds					
Other Special Funds (Specify)					
RECREATION	2,362,812	2,640,478	4,306,944	1,666,466	63.11%
COUNTY	1,153,759	1,788,350	1,038,483	(749,867)	(41.93%)
TIMBER SALES, INTEREST, & OTHER	917,527	1,296,823	229,870	(1,066,953)	(82.27%)
Less: Estimated Cash Available Next Fiscal Period	(10,744,519)	(10,744,519)	(10,744,519)		
TOTAL FUNDS (equals Total Expenditures above)	4,434,098	5,725,651	5,575,297	(150,354)	(2.63%)
GENERAL FUND LAPSE					
III: PERSONNEL DATA					
Number of Positions Authorized in Appropriation Bill					
a.) Perm Full	48	48	48		
b.) Perm Part	20	20	20		
c.) T-L Full					
d.) T-L Part					
Average Annual Vacancy Rate (Percentage)					
a.) Perm Full	36.00	36.00	36.00		
b.) Perm Part	100.00	100.00	100.00		
c.) T-L Full					
d.) T-L Part					

Approved by: George DeCoux
Official of Board or Commission

Budget Officer: George DeCoux / gdecoux@phwd.net

Submitted by: George DeCoux

Phone Number: 601-318-1206

Date: 7/30/2021 3:03 PM

Title: Comptroller

Name of Agency : Pat Harrison Waterway District

Specify Funding Sources As Shown Below	FY 2021 Actual Amount	% of Line Item	% of Total Budget	FY 2022 Estimated Amount	% of Line Item	% of Total Budget	FY 2023 Requested Amount	% of Line Item	% of Total Budget
1. General _____ State Support Special (Specify)									
2. Budget Contingency Fund									
3. Education Enhancement Fund									
4. Health Care Expendable Fund									
5. Tobacco Control Fund									
6. Capital Expense Fund									
7. Working Cash Stabilization Reserve Fund									
8. BP Settlement Fund									
9. Gulf Coast Restoration Fund									
10. Back To Business Mississippi Grant Fund									
11. MS COVID-19 Relief Payment Fund									
12. DFA CARES Act COVID-19 Fund									
13. MS Tourism Recovery Fund									
14. MS Nonprofit Museums Recovery Fund									
15. Equity in Distance Learning Fund									
16. Postsecondary Education COVID-19 Relief Grant Fund									
17. Independent Schools' COVID-19 Assistance Grant Fund									
18. MS Pandemic Response Broadband Availability Grant Program Fund									
19. MS Emergency Management Agency COVID-19 Fund									
20. MS Electric Cooperatives Broadband COVID-19 Grant Program Fund									
21. COVID-19 Broadband Provider Grant Program Fund									
22. Rental Assistance Grant Program Fund									
23. ICU Infrastructure Fund									
24. Poultry Farmer Stabilization Grant Program Fund									
25. Mississippi Supplemental CFAP Grant Program Fund									
26. Sweet Potato Farm Sustainment Grant Program Fund									
27. Coronavirus Local Fiscal Recovery Fund									
28. Coronavirus State Fiscal Recovery Fund									
29. Federal _____ Other Special (Specify)									
30. RECREATION	802,184	52.00%		903,923	52.00%		565,739	52.00%	
31. COUNTY	740,478	48.00%		834,390	48.00%		522,220	48.00%	
32. TIMBER SALES, INTEREST, & OTHER									
33.									
Total Salaries	1,542,662		34.79%	1,738,313		30.36%	1,087,959		19.51%

Name of Agency : Pat Harrison Waterway District

Specify Funding Sources As Shown Below	FY 2021 Actual Amount	% of Line Item	% of Total Budget	FY 2022 Estimated Amount	% of Line Item	% of Total Budget	FY 2023 Requested Amount	% of Line Item	% of Total Budget
1. General _____ State Support Special (Specify) _____									
2. Budget Contingency Fund									
3. Education Enhancement Fund									
4. Health Care Expendable Fund									
5. Tobacco Control Fund									
6. Capital Expense Fund									
7. Working Cash Stabilization Reserve Fund									
8. BP Settlement Fund									
9. Gulf Coast Restoration Fund									
10. Back To Business Mississippi Grant Fund									
11. MS COVID-19 Relief Payment Fund									
12. DFA CARES Act COVID-19 Fund									
13. MS Tourism Recovery Fund									
14. MS Nonprofit Museums Recovery Fund									
15. Equity in Distance Learning Fund									
16. Postsecondary Education COVID-19 Relief Grant Fund									
17. Independent Schools' COVID-19 Assistance Grant Fund									
18. MS Pandemic Response Broadband Availability Grant Program Fund									
19. MS Emergency Management Agency COVID-19 Fund									
20. MS Electric Cooperatives Broadband COVID-19 Grant Program Fund									
21. COVID-19 Broadband Provider Grant Program Fund									
22. Rental Assistance Grant Program Fund									
23. ICU Infrastructure Fund									
24. Poultry Farmer Stabilization Grant Program Fund									
25. Mississippi Supplemental CFAP Grant Program Fund									
26. Sweet Potato Farm Sustainment Grant Program Fund									
27. Coronavirus Local Fiscal Recovery Fund									
28. Coronavirus State Fiscal Recovery Fund									
29. Federal _____ Other Special (Specify) _____									
30. RECREATION	22,457	100.00		41,310	100.00		41,310	100.00	
31. COUNTY									
32. TIMBER SALES, INTEREST, & OTHER									
33.									
Total Travel	22,457		0.51%	41,310		0.72%	41,310		0.74%

Name of Agency : Pat Harrison Waterway District

Specify Funding Sources As Shown Below	FY 2021 Actual Amount	% of Line Item	% of Total Budget	FY 2022 Estimated Amount	% of Line Item	% of Total Budget	FY 2023 Requested Amount	% of Line Item	% of Total Budget
1. General _____ State Support Special (Specify)									
2. Budget Contingency Fund									
3. Education Enhancement Fund									
4. Health Care Expendable Fund									
5. Tobacco Control Fund									
6. Capital Expense Fund									
7. Working Cash Stabilization Reserve Fund									
8. BP Settlement Fund									
9. Gulf Coast Restoration Fund									
10. Back To Business Mississippi Grant Fund									
11. MS COVID-19 Relief Payment Fund									
12. DFA CARES Act COVID-19 Fund									
13. MS Tourism Recovery Fund									
14. MS Nonprofit Museums Recovery Fund									
15. Equity in Distance Learning Fund									
16. Postsecondary Education COVID-19 Relief Grant Fund									
17. Independent Schools' COVID-19 Assistance Grant Fund									
18. MS Pandemic Response Broadband Availability Grant Program Fund									
19. MS Emergency Management Agency COVID-19 Fund									
20. MS Electric Cooperatives Broadband COVID-19 Grant Program Fund									
21. COVID-19 Broadband Provider Grant Program Fund									
22. Rental Assistance Grant Program Fund									
23. ICU Infrastructure Fund									
24. Poultry Farmer Stabilization Grant Program Fund									
25. Mississippi Supplemental CFAP Grant Program Fund									
26. Sweet Potato Farm Sustainment Grant Program Fund									
27. Coronavirus Local Fiscal Recovery Fund									
28. Coronavirus State Fiscal Recovery Fund									
29. Federal _____ Other Special (Specify)									
30. RECREATION	887,597	51.00%		1,010,641	50.53%		1,010,641	50.53%	
31. COUNTY									
32. TIMBER SALES, INTEREST, & OTHER	852,790	49.00%		989,359	49.47%		989,359	49.47%	
33.									
Total Contractual	1,740,387		39.25%	2,000,000		34.93%	2,000,000		35.87%

Name of Agency : Pat Harrison Waterway District

Specify Funding Sources As Shown Below	FY 2021 Actual Amount	% of Line Item	% of Total Budget	FY 2022 Estimated Amount	% of Line Item	% of Total Budget	FY 2023 Requested Amount	% of Line Item	% of Total Budget
1. General _____ State Support Special (Specify)									
2. Budget Contingency Fund									
3. Education Enhancement Fund									
4. Health Care Expendable Fund									
5. Tobacco Control Fund									
6. Capital Expense Fund									
7. Working Cash Stabilization Reserve Fund									
8. BP Settlement Fund									
9. Gulf Coast Restoration Fund									
10. Back To Business Mississippi Grant Fund									
11. MS COVID-19 Relief Payment Fund									
12. DFA CARES Act COVID-19 Fund									
13. MS Tourism Recovery Fund									
14. MS Nonprofit Museums Recovery Fund									
15. Equity in Distance Learning Fund									
16. Postsecondary Education COVID-19 Relief Grant Fund									
17. Independent Schools' COVID-19 Assistance Grant Fund									
18. MS Pandemic Response Broadband Availability Grant Program Fund									
19. MS Emergency Management Agency COVID-19 Fund									
20. MS Electric Cooperatives Broadband COVID-19 Grant Program Fund									
21. COVID-19 Broadband Provider Grant Program Fund									
22. Rental Assistance Grant Program Fund									
23. ICU Infrastructure Fund									
24. Poultry Farmer Stabilization Grant Program Fund									
25. Mississippi Supplemental CFAP Grant Program Fund									
26. Sweet Potato Farm Sustainment Grant Program Fund									
27. Coronavirus Local Fiscal Recovery Fund									
28. Coronavirus State Fiscal Recovery Fund									
29. Federal _____ Other Special (Specify)									
30. RECREATION	578,304	100.00		684,604	100.00		684,604	100.00	
31. COUNTY									
32. TIMBER SALES, INTEREST, & OTHER									
33.									
Total Commodities	578,304		13.04%	684,604		11.96%	684,604		12.28%

REQUEST BY FUNDING SOURCE

Name of Agency : Pat Harrison Waterway District

Specify Funding Sources As Shown Below	FY 2021 Actual Amount	% of Line Item	% of Total Budget	FY 2022 Estimated Amount	% of Line Item	% of Total Budget	FY 2023 Requested Amount	% of Line Item	% of Total Budget
1. General _____ State Support Special (Specify)									
2. Budget Contingency Fund									
3. Education Enhancement Fund									
4. Health Care Expendable Fund									
5. Tobacco Control Fund									
6. Capital Expense Fund									
7. Working Cash Stabilization Reserve Fund									
8. BP Settlement Fund									
9. Gulf Coast Restoration Fund									
10. Back To Business Mississippi Grant Fund									
11. MS COVID-19 Relief Payment Fund									
12. DFA CARES Act COVID-19 Fund									
13. MS Tourism Recovery Fund									
14. MS Nonprofit Museums Recovery Fund									
15. Equity in Distance Learning Fund									
16. Postsecondary Education COVID-19 Relief Grant Fund									
17. Independent Schools' COVID-19 Assistance Grant Fund									
18. MS Pandemic Response Broadband Availability Grant Program Fund									
19. MS Emergency Management Agency COVID-19 Fund									
20. MS Electric Cooperatives Broadband COVID-19 Grant Program Fund									
21. COVID-19 Broadband Provider Grant Program Fund									
22. Rental Assistance Grant Program Fund									
23. ICU Infrastructure Fund									
24. Poultry Farmer Stabilization Grant Program Fund									
25. Mississippi Supplemental CFAP Grant Program Fund									
26. Sweet Potato Farm Sustainment Grant Program Fund									
27. Coronavirus Local Fiscal Recovery Fund									
28. Coronavirus State Fiscal Recovery Fund									
29. Federal _____ Other Special (Specify)									
30. RECREATION									
31. COUNTY									
32. TIMBER SALES, INTEREST, & OTHER	47,442	100.00		150,000	100.00		650,000	100.00	
33.									
Total Capital Other Than Equipment	47,442		1.07%	150,000		2.62%	650,000		11.66%

Name of Agency : Pat Harrison Waterway District

Specify Funding Sources As Shown Below	FY 2021 Actual Amount	% of Line Item	% of Total Budget	FY 2022 Estimated Amount	% of Line Item	% of Total Budget	FY 2023 Requested Amount	% of Line Item	% of Total Budget
1. General _____ State Support Special (Specify)									
2. Budget Contingency Fund									
3. Education Enhancement Fund									
4. Health Care Expendable Fund									
5. Tobacco Control Fund									
6. Capital Expense Fund									
7. Working Cash Stabilization Reserve Fund									
8. BP Settlement Fund									
9. Gulf Coast Restoration Fund									
10. Back To Business Mississippi Grant Fund									
11. MS COVID-19 Relief Payment Fund									
12. DFA CARES Act COVID-19 Fund									
13. MS Tourism Recovery Fund									
14. MS Nonprofit Museums Recovery Fund									
15. Equity in Distance Learning Fund									
16. Postsecondary Education COVID-19 Relief Grant Fund									
17. Independent Schools' COVID-19 Assistance Grant Fund									
18. MS Pandemic Response Broadband Availability Grant Program Fund									
19. MS Emergency Management Agency COVID-19 Fund									
20. MS Electric Cooperatives Broadband COVID-19 Grant Program Fund									
21. COVID-19 Broadband Provider Grant Program Fund									
22. Rental Assistance Grant Program Fund									
23. ICU Infrastructure Fund									
24. Poultry Farmer Stabilization Grant Program Fund									
25. Mississippi Supplemental CFAP Grant Program Fund									
26. Sweet Potato Farm Sustainment Grant Program Fund									
27. Coronavirus Local Fiscal Recovery Fund									
28. Coronavirus State Fiscal Recovery Fund									
29. Federal _____ Other Special (Specify)									
30. RECREATION									
31. COUNTY									
32. TIMBER SALES, INTEREST, & OTHER	17,295	100.00		157,464	100.00		157,464	100.00	
33.									
Total Capital Equipment	17,295		0.39%	157,464		2.75%	157,464		2.82%

Name of Agency : Pat Harrison Waterway District

Specify Funding Sources As Shown Below	FY 2021 Actual Amount	% of Line Item	% of Total Budget	FY 2022 Estimated Amount	% of Line Item	% of Total Budget	FY 2023 Requested Amount	% of Line Item	% of Total Budget
1. General _____ State Support Special (Specify)									
2. Budget Contingency Fund									
3. Education Enhancement Fund									
4. Health Care Expendable Fund									
5. Tobacco Control Fund									
6. Capital Expense Fund									
7. Working Cash Stabilization Reserve Fund									
8. BP Settlement Fund									
9. Gulf Coast Restoration Fund									
10. Back To Business Mississippi Grant Fund									
11. MS COVID-19 Relief Payment Fund									
12. DFA CARES Act COVID-19 Fund									
13. MS Tourism Recovery Fund									
14. MS Nonprofit Museums Recovery Fund									
15. Equity in Distance Learning Fund									
16. Postsecondary Education COVID-19 Relief Grant Fund									
17. Independent Schools' COVID-19 Assistance Grant Fund									
18. MS Pandemic Response Broadband Availability Grant Program Fund									
19. MS Emergency Management Agency COVID-19 Fund									
20. MS Electric Cooperatives Broadband COVID-19 Grant Program Fund									
21. COVID-19 Broadband Provider Grant Program Fund									
22. Rental Assistance Grant Program Fund									
23. ICU Infrastructure Fund									
24. Poultry Farmer Stabilization Grant Program Fund									
25. Mississippi Supplemental CFAP Grant Program Fund									
26. Sweet Potato Farm Sustainment Grant Program Fund									
27. Coronavirus Local Fiscal Recovery Fund									
28. Coronavirus State Fiscal Recovery Fund									
29. Federal _____ Other Special (Specify)									
30. RECREATION	72,270	100.00							
31. COUNTY									
32. TIMBER SALES, INTEREST, & OTHER									
33.									
Total Vehicles	72,270		1.63%						

Name of Agency : Pat Harrison Waterway District

Specify Funding Sources As Shown Below	FY 2021 Actual Amount	% of Line Item	% of Total Budget	FY 2022 Estimated Amount	% of Line Item	% of Total Budget	FY 2023 Requested Amount	% of Line Item	% of Total Budget
1. General _____ State Support Special (Specify)									
2. Budget Contingency Fund									
3. Education Enhancement Fund									
4. Health Care Expendable Fund									
5. Tobacco Control Fund									
6. Capital Expense Fund									
7. Working Cash Stabilization Reserve Fund									
8. BP Settlement Fund									
9. Gulf Coast Restoration Fund									
10. Back To Business Mississippi Grant Fund									
11. MS COVID-19 Relief Payment Fund									
12. DFA CARES Act COVID-19 Fund									
13. MS Tourism Recovery Fund									
14. MS Nonprofit Museums Recovery Fund									
15. Equity in Distance Learning Fund									
16. Postsecondary Education COVID-19 Relief Grant Fund									
17. Independent Schools' COVID-19 Assistance Grant Fund									
18. MS Pandemic Response Broadband Availability Grant Program Fund									
19. MS Emergency Management Agency COVID-19 Fund									
20. MS Electric Cooperatives Broadband COVID-19 Grant Program Fund									
21. COVID-19 Broadband Provider Grant Program Fund									
22. Rental Assistance Grant Program Fund									
23. ICU Infrastructure Fund									
24. Poultry Farmer Stabilization Grant Program Fund									
25. Mississippi Supplemental CFAP Grant Program Fund									
26. Sweet Potato Farm Sustainment Grant Program Fund									
27. Coronavirus Local Fiscal Recovery Fund									
28. Coronavirus State Fiscal Recovery Fund									
29. Federal _____ Other Special (Specify)									
30. RECREATION									
31. COUNTY									
32. TIMBER SALES, INTEREST, & OTHER									
33.									
Total Wireless Communication Devs.									

Name of Agency : Pat Harrison Waterway District

Specify Funding Sources As Shown Below	FY 2021 Actual Amount	% of Line Item	% of Total Budget	FY 2022 Estimated Amount	% of Line Item	% of Total Budget	FY 2023 Requested Amount	% of Line Item	% of Total Budget
1. General _____ State Support Special (Specify) _____									
2. Budget Contingency Fund									
3. Education Enhancement Fund									
4. Health Care Expendable Fund									
5. Tobacco Control Fund									
6. Capital Expense Fund									
7. Working Cash Stabilization Reserve Fund									
8. BP Settlement Fund									
9. Gulf Coast Restoration Fund									
10. Back To Business Mississippi Grant Fund									
11. MS COVID-19 Relief Payment Fund									
12. DFA CARES Act COVID-19 Fund									
13. MS Tourism Recovery Fund									
14. MS Nonprofit Museums Recovery Fund									
15. Equity in Distance Learning Fund									
16. Postsecondary Education COVID-19 Relief Grant Fund									
17. Independent Schools' COVID-19 Assistance Grant Fund									
18. MS Pandemic Response Broadband Availability Grant Program Fund									
19. MS Emergency Management Agency COVID-19 Fund									
20. MS Electric Cooperatives Broadband COVID-19 Grant Program Fund									
21. COVID-19 Broadband Provider Grant Program Fund									
22. Rental Assistance Grant Program Fund									
23. ICU Infrastructure Fund									
24. Poultry Farmer Stabilization Grant Program Fund									
25. Mississippi Supplemental CFAP Grant Program Fund									
26. Sweet Potato Farm Sustainment Grant Program Fund									
27. Coronavirus Local Fiscal Recovery Fund									
28. Coronavirus State Fiscal Recovery Fund									
29. Federal _____ Other Special (Specify) _____									
30. RECREATION									
31. COUNTY	413,281	100.00		953,960	100.00		953,960	100.00	
32. TIMBER SALES, INTEREST, & OTHER									
33.									
Total Subsidies	413,281		9.32%	953,960		16.66%	953,960		17.11%

Name of Agency : Pat Harrison Waterway District

Specify Funding Sources As Shown Below	FY 2021 Actual Amount	% of Line Item	% of Total Budget	FY 2022 Estimated Amount	% of Line Item	% of Total Budget	FY 2023 Requested Amount	% of Line Item	% of Total Budget
1. General _____ State Support Special (Specify)									
2. Budget Contingency Fund									
3. Education Enhancement Fund									
4. Health Care Expendable Fund									
5. Tobacco Control Fund									
6. Capital Expense Fund									
7. Working Cash Stabilization Reserve Fund									
8. BP Settlement Fund									
9. Gulf Coast Restoration Fund									
10. Back To Business Mississippi Grant Fund									
11. MS COVID-19 Relief Payment Fund									
12. DFA CARES Act COVID-19 Fund									
13. MS Tourism Recovery Fund									
14. MS Nonprofit Museums Recovery Fund									
15. Equity in Distance Learning Fund									
16. Postsecondary Education COVID-19 Relief Grant Fund									
17. Independent Schools' COVID-19 Assistance Grant Fund									
18. MS Pandemic Response Broadband Availability Grant Program Fund									
19. MS Emergency Management Agency COVID-19 Fund									
20. MS Electric Cooperatives Broadband COVID-19 Grant Program Fund									
21. COVID-19 Broadband Provider Grant Program Fund									
22. Rental Assistance Grant Program Fund									
23. ICU Infrastructure Fund									
24. Poultry Farmer Stabilization Grant Program Fund									
25. Mississippi Supplemental CFAP Grant Program Fund									
26. Sweet Potato Farm Sustainment Grant Program Fund									
27. Coronavirus Local Fiscal Recovery Fund									
28. Coronavirus State Fiscal Recovery Fund									
29. Federal _____ Other Special (Specify)									
30. RECREATION	2,362,812	53.29%		2,640,478	46.12%		2,302,294	41.29%	
31. COUNTY	1,153,759	26.02%		1,788,350	31.23%		1,476,180	26.48%	
32. TIMBER SALES, INTEREST, & OTHER	917,527	20.69%		1,296,823	22.65%		1,796,823	32.23%	
33.									
TOTAL	4,434,098		100.00%	5,725,651		100.00%	5,575,297		100.00%

SPECIAL FUNDS DETAIL

Pat Harrison Waterway District (480-00)

Name of Agency

S. STATE SUPPORT SPECIAL FUNDS		(1) Actual Revenues FY 2021	(2) Estimated Revenues FY 2022	(3) Requested Revenues FY 2023
Source (Fund Number)	Detailed Description of Source			
Budget Contingency Fund	BCF - Budget Contingency Fund			
Education Enhancement Fund	EEF - Education Enhancement Fund			
Health Care Expendable Fund	HCEF - Health Care Expendable Fund			
Tobacco Control Fund	TCF - Tobacco Control Fund			
Capital Expense Fund	CEF - Capital Expense Fund			
Working Cash Stabilization Reserve Fund	WCSRF - Working Cash Stabilization Reserve Fund			
BP Settlement Fund	BPSF - BP Settlement Fund			
Gulf Coast Restoration Fund	GCRF - Gulf Coast Restoration Fund			
Back To Business Mississippi Grant Fund	BTBMGF - Back To Business Mississippi Grant Fund			
MS COVID-19 Relief Payment Fund	MCRPF - MS COVID-19 Relief Payment Fund			
DFA CARES Act COVID-19 Fund	DCACF - DFA CARES Act COVID-19 Fund			
MS Tourism Recovery Fund	MTRF - MS Tourism Recovery Fund			
MS Nonprofit Museums Recovery Fund	MNMRF - MS Nonprofit Museums Recovery Fund			
Equity in Distance Learning Fund	EIDLF - Equity in Distance Learning Fund			
Postsecondary Education COVID-19 Relief Grant Fund	PECMRGF - Postsecondary Education COVID-19 Relief Grant Fund			
Independent Schools' COVID-19 Assistance Grant Fund	ISCAGF - Independent Schools' COVID-19 Assistance Grant Fund			
MS Pandemic Response Broadband Availability Grant Program Fund	MPRBAGPF - MS Pandemic Response Broadband Availability Grant Program Fund			
MS Emergency Management Agency COVID-19 Fund	MEMACF - MS Emergency Management Agency COVID-19 Fund			
MS Electric Cooperatives Broadband COVID-19 Grant Program Fund	MECBCGPF - MS Electric Cooperatives Broadband COVID-19 Grant Program Fund			
COVID-19 Broadband Provider Grant Program Fund	CBPGPF - COVID-19 Broadband Provider Grant Program Fund			
Rental Assistance Grant Program Fund	RAGPF - Rental Assistance Grant Program Fund			
ICU Infrastructure Fund	IIF - ICU Infrastructure Fund			
Poultry Farmer Stabilization Grant Program Fund	PFSGPF - Poultry Farmer Stabilization Grant Program Fund			
Mississippi Supplemental CFAP Grant Program Fund	MSCGPF - Mississippi Supplemental CFAP Grant Program Fund			
Sweet Potato Farm Sustainment Grant Program Fund	SPFSGPF - Sweet Potato Farm Sustainment Grant Program Fund			
Coronavirus Local Fiscal Recovery Fund	CLFRF - Coronavirus Local Fiscal Recovery Fund			
Coronavirus State Fiscal Recovery Fund	CSFRF - Coronavirus State Fiscal Recovery Fund			
State Support Special Fund TOTAL				
STATE SUPPORT SPECIAL FUND LAPSE				

A. FEDERAL FUNDS *		Percentage Match Requirement	(1) Actual Revenues FY 2021	(2) Estimated Revenues FY 2022	(3) Requested Revenues FY 2023
Source (Fund Number)	Detailed Description of Source	FY 2022 FY 2023			
	Cash Balancc-Unencumbercd				
Federal Fund TOTAL					

SPECIAL FUNDS DETAIL

Pat Harrison Waterway District (480-00)

Name of Agency

B. OTHER SPECIAL FUNDS (NON-FED'L)		(1) Actual Revenues FY 2021	(2) Estimated Revenues FY 2022	(3) Requested Revenues FY 2023
Source (Fund Number)	Detailed Description of Source			
	Cash Balance-Unencumbered	10,744,519	10,744,519	10,744,519
RECREATION ()		2,362,812	2,640,478	4,306,944
COUNTY ()		1,153,759	1,788,350	1,038,483
TIMBER SALES, INTEREST, & OTHER ()		917,527	1,296,823	229,870
Other Special Fund TOTAL		15,178,617	16,470,170	16,319,816

SECTIONS S + A + B TOTAL		15,178,617	16,470,170	16,319,816
---------------------------------	--	-------------------	-------------------	-------------------

C. TREASURY FUND/BANK ACCOUNTS *			(1) Reconciled Balance as of 6/30/21	(2) Balance as of 6/30/22	(3) Balance as of 6/30/23
Name of Fund/Account	Fund/Account Number	Name of Bank (If Applicable)			
CD	7060102386	First State Bank - Waynesboro	206,531	206,531	206,531
CD	7060149790	First State Bank - Waynesboro	200,663	200,663	200,663
Maynor Creek Water Park	003395	First State Bank - Waynesboro	46,233	46,233	46,233
CD	7060149800	First State Bank - Waynesboro	321,023	321,023	321,023
Bancorpsouth General Accounts Payable	510-291-8	Bancorp South	201,386	201,386	201,386
Recreation Depository Bancorp	60490091	Bancorp South	107,683	107,683	107,683
BCWP Checking	60285392	Bancorp South	52,534	52,534	52,534
County Depository	60490083	Bancorp South	1,798,548	1,798,548	1,798,548
Timber Cash in Bank	60457330	Bancorp South	1,333,830	1,333,830	1,333,830
Cash Debt Service (Closed)	32813750	Bancorp South			
CD	5024433	Bank First - Newton	50,000	50,000	50,000
CD Newton County Bank	5024434	Bank First - Newton	200,000	200,000	200,000
CD Bank of Wiggins	90240	Bank of Wiggins	100,000	100,000	100,000
CD Bank of Wiggins	33758	Bank of Wiggins	71,277	71,277	71,277
CD Community Bank	6011270727	Community Bank	210,000	210,000	210,000
Credit Card Collection	1905201157	Great Southern	399,420	399,420	399,420
ACWP Checking	6307146004	Great Southern	13,479	13,479	13,479
Okatibbee Lake Water Park	6007487796	Great Southern	5,042	5,042	5,042
Turkey Creek Water Park	2607500325	Great Southern	7,864	7,864	7,864
Dunn's Falls Water Park	6307255037	Great Southern	3,285	3,285	3,285
Cash County Projects	1906243281	Great Southern	174,683	174,683	174,683
Cash in Payroll Checking	1906241319	Great Southern	196,785	196,785	196,785
Little Black Creek Water Park Closed)	0140635	Hancock Bank			
CD	1203743	Priority One	300,000	300,000	300,000
DCWP Checking	269456	Priority One	28,246	28,246	28,246
CD Building Reserve	203228	First Bank McComb	1,606,802	1,606,802	1,606,802
CD Citizens National Bank	12600043	First Bank McComb	500,000	500,000	500,000
CD Regions Main Reserve	130284473	Regions	255,000	255,000	255,000
CD The First Rec	216440	The First	525,000	525,000	525,000
FCWP Checking	2020033	The First	268,006	268,006	268,006
CD Timber	270538	The First			
CD The First	232868	The First	750,000	750,000	750,000
CD	270546	The First	600,000	600,000	600,000
CD Trustmark Projects	6003227	Trustmark	211,199	211,199	211,199

SPECIAL FUNDS DETAIL

Pat Harrison Waterway District (480-00)

Name of Agency

* Any non-federal funds that have restricted uses must be identified and narrative of restrictions attached.

**NARRATIVE OF SPECIAL FUNDS DETAIL AND TREASURY
FUND/BANK ACCOUNTS**

Pat Harrison Waterway District (480-00)

Name of Agency

OTHER SPECIAL FUNDS

Pat Harrison Waterway District was established as a special fund agency. The budget is funded by the ten member counties, fees collected from park users, timber and gravel sales, and interest from investments. This budget is conservative and is only for amounts needed to operate the District's three programs. The District's County Funds has various flood control projects with the member counties, with the District agreeing to pay for a portion of each project. Some of the projects go back several years and are recorded as liabilities on the PHWD financial statements. The projects have not been completed due to the counties not providing the necessary paperwork to comply with PHWD board policy. PHWD maintains several CD's designated as Projects or Project CD's for the purpose of paying for the project liabilities when completed. There is no statutory requirement for cash to be encumbered for our works projects, but we are required by our independent auditor to maintain sufficient cash or CD's to pay off all of these liabilities if they were to come due at the same time.

TREASURY FUND / BANK

The various accounts listed are for clearing payroll and accounts payable checks. The CD's are investments to be used in operations during the year. There are also CD investments for county projects where we have made commitments to pay for flood control or water management projects. We also have a maintenance reserve account for repair work at the various parks we operate. These reserve accounts are restricted to repair work on millennium cabins.

The District has a Building Reserve CD that represents the proceeds of the sale of the District Office. The board may elect to build a new office at some point in the future and this money has been restricted to that purpose. The Maintenance Reserve CD's are restricted for the repair and maintenance of the millennium cabins. The payroll account is restricted to pay employees salaries, payroll deductions, insurance and other related payroll purposes. The AP accounts is used only for accounts payable. The timber CD from FY 2020 was cashed in at maturity and is in a Timber checking account. The money was moved from the Timber CD to a Timber checking account at the beginning of the Covid-19 crisis and is to be used to support recreation activities if the virus adversely affects out recreation activities. If not used for recreation support, then the money will eventually be moved back into a Timber CD. The remaining bank accounts are operational accounts for each park or for the County or Recreation Fund.

CONTINUATION AND EXPANDED TOTAL REQUEST

Pat Harrison Waterway District (480-00)

SUMMARY OF ALL PROGRAMS

Name of Agency	FY 2021 Actual					Program
	(1) General	(2) State Support Special	(3) Federal	(4) Other Special	(5) Total	
Salaries,Wages & Fringe				1,542,662	1,542,662	
Travel				22,457	22,457	
Contractual Services				1,740,387	1,740,387	
Commodities				578,304	578,304	
Other Than Equipment				47,442	47,442	
Equipment				17,295	17,295	
Vehicles				72,270	72,270	
Wireless Communication Devices						
Subsidies, Loans & Grants				413,281	413,281	
Total				4,434,098	4,434,098	
No. of Positions (FTE)				68.00	68.00	

	FY 2022 Estimated				
	(6) General	(7) State Support Special	(8) Federal	(9) Other Special	(10) Total
Salaries,Wages & Fringe				1,738,313	1,738,313
Travel				41,310	41,310
Contractual Services				2,000,000	2,000,000
Commodities				684,604	684,604
Other Than Equipment				150,000	150,000
Equipment				157,464	157,464
Vehicles					
Wireless Communication Devices					
Subsidies, Loans & Grants				953,960	953,960
Total				5,725,651	5,725,651
No. of Positions (FTE)				68.00	68.00

	FY 2023 Increase/Decrease for Continuation				
	(11) General	(12) State Support Special	(13) Federal	(14) Other Special	(15) Total
Salaries,Wages & Fringe				(650,354)	(650,354)
Travel					
Contractual Services					
Commodities					
Other Than Equipment				500,000	500,000
Equipment					
Vehicles					
Wireless Communication Devices					
Subsidies, Loans & Grants					
Total				(150,354)	(150,354)
No. of Positions (FTE)					

Note: FY2023 Total Request = FY2022 Estimated + FY2023 Incr(Decr) for Continuation + FY2023 Expansion/Reduction of Existing Activities + FY2023 New Activities.

CONTINUATION AND EXPANDED TOTAL REQUEST

Pat Harrison Waterway District (480-00)

SUMMARY OF ALL PROGRAMS

Name of Agency	FY 2023 Expansion/Reduction of Existing Activities				
	(16) General	(17) State Support Special	(18) Federal	(19) Other Special	(20) Total
Salaries,Wages & Fringe					
Travel					
Contractual Services					
Commodities					
Other Than Equipment					
Equipment					
Vehicles					
Wireless Communication Devices					
Subsidies, Loans & Grants					
Total					
No. of Positions (FTE)					

	FY 2023 New Activities (*)				
	(21) General	(22) State Support Special	(23) Federal	(24) Other Special	(25) Total
Salaries,Wages & Fringe					
Travel					
Contractual Services					
Commodities					
Other Than Equipment					
Equipment					
Vehicles					
Wireless Communication Devices					
Subsidies, Loans & Grants					
Total					
No. of Positions (FTE)					

	FY 2023 Total Request				
	(26) General	(27) State Support Special	(28) Federal	(29) Other Special	(30) Total
Salaries,Wages & Fringe				1,087,959	1,087,959
Travel				41,310	41,310
Contractual Services				2,000,000	2,000,000
Commodities				684,604	684,604
Other Than Equipment				650,000	650,000
Equipment				157,464	157,464
Vehicles					
Wireless Communication Devices					
Subsidies, Loans & Grants				953,960	953,960
Total				5,575,297	5,575,297
No. of Positions (FTE)				68.00	68.00

Note: FY2023 Total Request = FY2022 Estimated + FY2023 Incr(Decr) for Continuation + FY2023 Expansion/Reduction of Existing Activities + FY2023 New Activities.

SUMMARY OF PROGRAMS
FORM MBR-1-03sum

Pat Harrison Waterway District (480-00)

Name of Agency

FUNDING REQUESTED FISCAL YEAR 2023

	PROGRAM	GENERAL	ST. SUPP. SPECIAL	FEDERAL	OTHER SPECIAL	TOTAL
1.	Recreation				4,306,944	4,306,944
2.	Flood Control				1,038,483	1,038,483
3.	Water Management				229,870	229,870
	Summary of All Programs				5,575,297	5,575,297

CONTINUATION AND EXPANDED REQUEST

Program 1 of 3

Pat Harrison Waterway District (480-00)

Recreation

Name of Agency

Program

	FY 2021 Actual				
	(1) General	(2) State Support Special	(3) Federal	(4) Other Special	(5) Total
Salaries,Wages & Fringe				1,231,153	1,231,153
Travel				5,146	5,146
Contractual Services				1,651,291	1,651,291
Commodities				578,304	578,304
Other Than Equipment				23,722	23,722
Equipment				17,295	17,295
Vehicles				72,270	72,270
Wireless Communication Devices					
Subsidies, Loans & Grants				51,295	51,295
Total				3,630,476	3,630,476
No. of Positions (FTE)				48.00	48.00

	FY 2022 Estimated				
	(6) General	(7) State Support Special	(8) Federal	(9) Other Special	(10) Total
Salaries,Wages & Fringe				1,387,348	1,387,348
Travel				9,501	9,501
Contractual Services				1,897,600	1,897,600
Commodities				684,604	684,604
Other Than Equipment				75,000	75,000
Equipment				157,464	157,464
Vehicles					
Wireless Communication Devices					
Subsidies, Loans & Grants				114,475	114,475
Total				4,325,992	4,325,992
No. of Positions (FTE)				48.00	48.00

	FY 2023 Increase/Decrease for Continuation				
	(11) General	(12) State Support Special	(13) Federal	(14) Other Special	(15) Total
Salaries,Wages & Fringe				(519,048)	(519,048)
Travel					
Contractual Services					
Commodities					
Other Than Equipment				500,000	500,000
Equipment					
Vehicles					
Wireless Communication Devices					
Subsidies, Loans & Grants					
Total				(19,048)	(19,048)
No. of Positions (FTE)					

Note: FY2023 Total Request = FY2022 Estimated + FY2023 Incr(Decr) for Continuation + FY2023 Expansion/Reduction of Existing Activities + FY2023 New Activities.

CONTINUATION AND EXPANDED REQUEST

Program 1 of 3

Pat Harrison Waterway District (480-00)

Recreation

Name of Agency

Program

	FY 2023 Expansion/Reduction of Existing Activities				
	(16) General	(17) State Support Special	(18) Federal	(19) Other Special	(20) Total
Salaries,Wages & Fringe					
Travel					
Contractual Services					
Commodities					
Other Than Equipment					
Equipment					
Vehicles					
Wireless Communication Devices					
Subsidies, Loans & Grants					
Total					
No. of Positions (FTE)					

	FY 2023 New Activities (*)				
	(21) General	(22) State Support Special	(23) Federal	(24) Other Special	(25) Total
Salaries,Wages & Fringe					
Travel					
Contractual Services					
Commodities					
Other Than Equipment					
Equipment					
Vehicles					
Wireless Communication Devices					
Subsidies, Loans & Grants					
Total					
No. of Positions (FTE)					

	FY 2023 Total Request				
	(26) General	(27) State Support Special	(28) Federal	(29) Other Special	(30) Total
Salaries,Wages & Fringe				868,300	868,300
Travel				9,501	9,501
Contractual Services				1,897,600	1,897,600
Commodities				684,604	684,604
Other Than Equipment				575,000	575,000
Equipment				157,464	157,464
Vehicles					
Wireless Communication Devices					
Subsidies, Loans & Grants				114,475	114,475
Total				4,306,944	4,306,944
No. of Positions (FTE)				48.00	48.00

Note: FY2023 Total Request = FY2022 Estimated + FY2023 Incr(Decr) for Continuation + FY2023 Expansion/Reduction of Existing Activities + FY2023 New Activities.

CONTINUATION AND EXPANDED REQUEST

Program 2 of 3

Pat Harrison Waterway District (480-00)

Flood Control

Name of Agency

Program

	FY 2021 Actual				
	(1) General	(2) State Support Special	(3) Federal	(4) Other Special	(5) Total
Salaries,Wages & Fringe				148,303	148,303
Travel				8,375	8,375
Contractual Services				44,548	44,548
Commodities					
Other Than Equipment				11,860	11,860
Equipment					
Vehicles					
Wireless Communication Devices					
Subsidies, Loans & Grants				360,894	360,894
Total				573,980	573,980
No. of Positions (FTE)				10.00	10.00

	FY 2022 Estimated				
	(6) General	(7) State Support Special	(8) Federal	(9) Other Special	(10) Total
Salaries,Wages & Fringe				167,052	167,052
Travel				15,285	15,285
Contractual Services				51,200	51,200
Commodities					
Other Than Equipment				37,500	37,500
Equipment					
Vehicles					
Wireless Communication Devices					
Subsidies, Loans & Grants				829,945	829,945
Total				1,100,982	1,100,982
No. of Positions (FTE)				10.00	10.00

	FY 2023 Increase/Decrease for Continuation				
	(11) General	(12) State Support Special	(13) Federal	(14) Other Special	(15) Total
Salaries,Wages & Fringe				(62,499)	(62,499)
Travel					
Contractual Services					
Commodities					
Other Than Equipment					
Equipment					
Vehicles					
Wireless Communication Devices					
Subsidies, Loans & Grants					
Total				(62,499)	(62,499)
No. of Positions (FTE)					

Note: FY2023 Total Request = FY2022 Estimated + FY2023 Incr(Decr) for Continuation + FY2023 Expansion/Reduction of Existing Activities + FY2023 New Activities.

CONTINUATION AND EXPANDED REQUEST

Pat Harrison Waterway District (480-00)

Flood Control

Name of Agency

Program

	FY 2023 Expansion/Reduction of Existing Activities				
	(16) General	(17) State Support Special	(18) Federal	(19) Other Special	(20) Total
Salaries,Wages & Fringe					
Travel					
Contractual Services					
Commodities					
Other Than Equipment					
Equipment					
Vehicles					
Wireless Communication Devices					
Subsidies, Loans & Grants					
Total					
No. of Positions (FTE)					

	FY 2023 New Activities (*)				
	(21) General	(22) State Support Special	(23) Federal	(24) Other Special	(25) Total
Salaries,Wages & Fringe					
Travel					
Contractual Services					
Commodities					
Other Than Equipment					
Equipment					
Vehicles					
Wireless Communication Devices					
Subsidies, Loans & Grants					
Total					
No. of Positions (FTE)					

	FY 2023 Total Request				
	(26) General	(27) State Support Special	(28) Federal	(29) Other Special	(30) Total
Salaries,Wages & Fringe				104,553	104,553
Travel				15,285	15,285
Contractual Services				51,200	51,200
Commodities					
Other Than Equipment				37,500	37,500
Equipment					
Vehicles					
Wireless Communication Devices					
Subsidies, Loans & Grants				829,945	829,945
Total				1,038,483	1,038,483
No. of Positions (FTE)				10.00	10.00

Note: FY2023 Total Request = FY2022 Estimated + FY2023 Incr(Decr) for Continuation + FY2023 Expansion/Reduction of Existing Activities + FY2023 New Activities.

CONTINUATION AND EXPANDED REQUEST

Program 3 of 3
Water Management

Pat Harrison Waterway District (480-00)

	FY 2021 Actual				
	(1) General	(2) State Support Special	(3) Federal	(4) Other Special	(5) Total
Salaries,Wages & Fringe				163,206	163,206
Travel				8,936	8,936
Contractual Services				44,548	44,548
Commodities					
Other Than Equipment				11,860	11,860
Equipment					
Vehicles					
Wireless Communication Devices					
Subsidies, Loans & Grants				1,092	1,092
Total				229,642	229,642
No. of Positions (FTE)				10.00	10.00

	FY 2022 Estimated				
	(6) General	(7) State Support Special	(8) Federal	(9) Other Special	(10) Total
Salaries,Wages & Fringe				183,913	183,913
Travel				16,524	16,524
Contractual Services				51,200	51,200
Commodities					
Other Than Equipment				37,500	37,500
Equipment					
Vehicles					
Wireless Communication Devices					
Subsidies, Loans & Grants				9,540	9,540
Total				298,677	298,677
No. of Positions (FTE)				10.00	10.00

	FY 2023 Increase/Decrease for Continuation				
	(11) General	(12) State Support Special	(13) Federal	(14) Other Special	(15) Total
Salaries,Wages & Fringe				(68,807)	(68,807)
Travel					
Contractual Services					
Commodities					
Other Than Equipment					
Equipment					
Vehicles					
Wireless Communication Devices					
Subsidies, Loans & Grants					
Total				(68,807)	(68,807)
No. of Positions (FTE)					

Note: FY2023 Total Request = FY2022 Estimated + FY2023 Incr(Decr) for Continuation + FY2023 Expansion/Reduction of Existing Activities + FY2023 New Activities.

CONTINUATION AND EXPANDED REQUEST

Program 3 of 3
Water Management
Program

Pat Harrison Waterway District (480-00)

Name of Agency

	FY 2023 Expansion/Reduction of Existing Activities				
	(16) General	(17) State Support Special	(18) Federal	(19) Other Special	(20) Total
Salaries,Wages & Fringe					
Travel					
Contractual Services					
Commodities					
Other Than Equipment					
Equipment					
Vehicles					
Wireless Communication Devices					
Subsidies, Loans & Grants					
Total					
No. of Positions (FTE)					

	FY 2023 New Activities (*)				
	(21) General	(22) State Support Special	(23) Federal	(24) Other Special	(25) Total
Salaries,Wages & Fringe					
Travel					
Contractual Services					
Commodities					
Other Than Equipment					
Equipment					
Vehicles					
Wireless Communication Devices					
Subsidies, Loans & Grants					
Total					
No. of Positions (FTE)					

	FY 2023 Total Request				
	(26) General	(27) State Support Special	(28) Federal	(29) Other Special	(30) Total
Salaries,Wages & Fringe				115,106	115,106
Travel				16,524	16,524
Contractual Services				51,200	51,200
Commodities					
Other Than Equipment				37,500	37,500
Equipment					
Vehicles					
Wireless Communication Devices					
Subsidies, Loans & Grants				9,540	9,540
Total				229,870	229,870
No. of Positions (FTE)				10.00	10.00

Note: FY2023 Total Request = FY2022 Estimated + FY2023 Incr(Decr) for Continuation + FY2023 Expansion/Reduction of Existing Activities + FY2023 New Activities.

PROGRAM DECISION UNITS

Pat Harrison Waterway District

1 - Recreation

Name of Agency	Program Name						
	A	B	C	D	E	F	G
EXPENDITURES	FY 2022 Appropriated	Escalations By DFA	Non-Recurring Items	FLINT CREEK HORSE TRAIL	SALARY	Total Funding Change	FY 2023 Total Request
SALARIES	1,387,348				(519,048)	(519,048)	868,300
GENERAL							
ST. SUP. SPECIAL							
FEDERAL							
OTHER	1,387,348				(519,048)	(519,048)	868,300
TRAVEL	9,501						9,501
GENERAL							
ST. SUP. SPECIAL							
FEDERAL							
OTHER	9,501						9,501
CONTRACTUAL	1,897,600						1,897,600
GENERAL							
ST. SUP. SPECIAL							
FEDERAL							
OTHER	1,897,600						1,897,600
COMMODITIES	684,604						684,604
GENERAL							
ST. SUP. SPECIAL							
FEDERAL							
OTHER	684,604						684,604
CAPTITAL-OTE	75,000			500,000		500,000	575,000
GENERAL							
ST. SUP. SPECIAL							
FEDERAL							
OTHER	75,000			500,000		500,000	575,000
EQUIPMENT	157,464						157,464
GENERAL							
ST. SUP. SPECIAL							
FEDERAL							
OTHER	157,464						157,464
VEHICLES							
GENERAL							
ST. SUP. SPECIAL							
FEDERAL							
OTHER							
WIRELESS DEV							
GENERAL							
ST. SUP. SPECIAL							
FEDERAL							
OTHER							
SUBSIDIES	114,475						114,475
GENERAL							
ST. SUP. SPECIAL							
FEDERAL							
OTHER	114,475						114,475
TOTAL	4,325,992			500,000	(519,048)	(19,048)	4,306,944

FUNDING

GENERAL FUNDS							
ST. SUP. SPCL FUNDS							
FEDERAL FUNDS							
OTHER SP. FUNDS	4,325,992			500,000	(519,048)	(19,048)	4,306,944
TOTAL	4,325,992			500,000	(519,048)	(19,048)	4,306,944

POSITIONS

GENERAL FTE							
ST. SUP. SPCL. FTE							
FEDERAL FTE							
OTHER SP. FTE	48.00						48.00
TOTAL	48.00						48.00

PRIORITY LEVEL :

				1	1		
--	--	--	--	---	---	--	--

PROGRAM DECISION UNITS

Pat Harrison Waterway District

2 - Flood Control

Name of Agency

Program Name

	A	B	C	D	E	F		
EXPENDITURES	FY 2022 Appropriated	Escalations By DFA	Non-Recurring Items	SALARY	Total Funding Change	FY 2023 Total Request		
SALARIES	167,052			(62,499)	(62,499)	104,553		
GENERAL								
ST. SUP. SPECIAL								
FEDERAL								
OTHER	167,052			(62,499)	(62,499)	104,553		
TRAVEL	15,285					15,285		
GENERAL								
ST. SUP. SPECIAL								
FEDERAL								
OTHER	15,285					15,285		
CONTRACTUAL	51,200					51,200		
GENERAL								
ST. SUP. SPECIAL								
FEDERAL								
OTHER	51,200					51,200		
COMMODITIES								
GENERAL								
ST. SUP. SPECIAL								
FEDERAL								
OTHER								
CAPTITAL-OTE	37,500					37,500		
GENERAL								
ST. SUP. SPECIAL								
FEDERAL								
OTHER	37,500					37,500		
EQUIPMENT								
GENERAL								
ST. SUP. SPECIAL								
FEDERAL								
OTHER								
VEHICLES								
GENERAL								
ST. SUP. SPECIAL								
FEDERAL								
OTHER								
WIRELESS DEV								
GENERAL								
ST. SUP. SPECIAL								
FEDERAL								
OTHER								
SUBSIDIES	829,945					829,945		
GENERAL								
ST. SUP. SPECIAL								
FEDERAL								
OTHER	829,945					829,945		
TOTAL	1,100,982			(62,499)	(62,499)	1,038,483		

FUNDING

GENERAL FUNDS								
ST. SUP. SPCL FUNDS								
FEDERAL FUNDS								
OTHER SP. FUNDS	1,100,982			(62,499)	(62,499)	1,038,483		
TOTAL	1,100,982			(62,499)	(62,499)	1,038,483		

POSITIONS

GENERAL FTE								
ST. SUP. SPCL. FTE								
FEDERAL FTE								
OTHER SP. FTE	10.00					10.00		
TOTAL	10.00					10.00		

PRIORITY LEVEL :

				1				
--	--	--	--	---	--	--	--	--

PROGRAM DECISION UNITS

Pat Harrison Waterway District

3 - Water Management

Name of Agency

Program Name

	A	B	C	D	E	F		
EXPENDITURES	FY 2022 Appropriated	Escalations By DFA	Non-Recurring Items	SALARY	Total Funding Change	FY 2023 Total Request		
SALARIES	183,913			(68,807)	(68,807)	115,106		
GENERAL								
ST. SUP. SPECIAL								
FEDERAL								
OTHER	183,913			(68,807)	(68,807)	115,106		
TRAVEL	16,524					16,524		
GENERAL								
ST. SUP. SPECIAL								
FEDERAL								
OTHER	16,524					16,524		
CONTRACTUAL	51,200					51,200		
GENERAL								
ST. SUP. SPECIAL								
FEDERAL								
OTHER	51,200					51,200		
COMMODITIES								
GENERAL								
ST. SUP. SPECIAL								
FEDERAL								
OTHER								
CAPTITAL-OTE	37,500					37,500		
GENERAL								
ST. SUP. SPECIAL								
FEDERAL								
OTHER	37,500					37,500		
EQUIPMENT								
GENERAL								
ST. SUP. SPECIAL								
FEDERAL								
OTHER								
VEHICLES								
GENERAL								
ST. SUP. SPECIAL								
FEDERAL								
OTHER								
WIRELESS DEV								
GENERAL								
ST. SUP. SPECIAL								
FEDERAL								
OTHER								
SUBSIDIES	9,540					9,540		
GENERAL								
ST. SUP. SPECIAL								
FEDERAL								
OTHER	9,540					9,540		
TOTAL	298,677			(68,807)	(68,807)	229,870		

FUNDING

GENERAL FUNDS								
ST. SUP. SPCL FUNDS								
FEDERAL FUNDS								
OTHER SP. FUNDS	298,677			(68,807)	(68,807)	229,870		
TOTAL	298,677			(68,807)	(68,807)	229,870		

POSITIONS

GENERAL FTE								
ST. SUP. SPCL. FTE								
FEDERAL FTE								
OTHER SP. FTE	10.00					10.00		
TOTAL	10.00					10.00		

PRIORITY LEVEL :

					I			
--	--	--	--	--	---	--	--	--

PROGRAM NARRATIVE

Program Data Collected in Accordance with the Mississippi Performance Budget and Strategic Planning Act of 1994
(To Accompany Form MBR-1-03)

Pat Harrison Waterway District

1 - Recreation

Name of Agency

Program Name

I. Program Description:

The District owns and operates eight recreational facilities, one of which is a historic site, including seven large lakes, 509 class A&B campsites, day-use areas, 71 cabins, 64 primitive camp sites, and associated support facilities. These eight recreational parks are open year-round for use by the general public. In addition, the District owns twelve boat ramps located throughout the District. These ramps are being maintained by our member counties through interlocal governmental agreements. Also, we are in the process of adding two bunkhouses at Turkey Creek and two at Archusa Creek and we are adding about ten camping sites at each of the two parks

II. Program Objective:

The objective of this program is to provide water-related recreational opportunities to the residents of the District's twelve member counties, to all the residents of the State of Mississippi and to out-of-state park visitors. Other objectives include creating employment opportunities for the residents of this area and improving economic conditions through the expenditure of both District and park patron funds.

III. Current program activities as supported by the funding in Columns 6-15 (FY 2022 & FY 2023 Increase/Decrease for continuations) of MBR-1-03 and designated Budget Unit Decisions columns of MBR-1-03-A:

(D) FLINT CREEK HORSE TRAIL AND MAYNOR CREEK CAMPSITE REMOVAL:

THE PAT HARRISON WATERWAY DISTRICT BOARD HAS DECIDED TO BUILD A HORSE TRAIL AT FLINT CREEK AND TO COMPLETE A MAJOR CAMPSITE RENOVATION AT MAYNOR CREEK. THE TOTAL COST FOR BOTH PROJECTS IS EXPECTED TO BE ABOUT \$750,000. SOME OF THE COST WILL USE EXISTING FUNDS, BUT WE ARE REQUESTING \$500,000 IN ADDITIONAL FUNDING FOR THESE PROJECTS. THE HORSE TRAIL WILL BE FUNDED, IN PART, WITH A GRANT THROUGH THE MISSISSIPPI DEPARTMENT OF TRANSPORTATION THAT WILL REIMBURSE PHWD EIGHTY PERCENT OF THE COST UP TO \$400,000. PHWD WILL BE REQUIRED TO PAY THE FULL \$500,000 COST PRIOR TO REIMBURSEMENT. THE MAYNOR CREEK RENOVATION COST WILL BE PAID IN FULL BY PHWD.

(E) SALARY:

THE SALARY REDUCTION IS \$519,048 WHICH IS THE AMOUNT OF THE VACANT PINS.

PROGRAM NARRATIVE

Program Data Collected in Accordance with the Mississippi Performance Budget and Strategic Planning Act of 1994
(To Accompany Form MBR-1-03)

Pat Harrison Waterway District

2 - Flood Control

Name of Agency

Program Name

I. Program Description:

The purpose of the program is to plan, develop, construct and operate flood prevention projects and measures, in cooperation with the State of Mississippi, the U.S. Army Corp of Engineers, the Natural Resources Conservation Service, and the twelve member counties.

II. Program Objective:

The objective of this program is to provide assistance in the planning and development of flood control measures along rivers and streams of the Pascagoula River Basin and the District's twelve member counties.

III. Current program activities as supported by the funding in Columns 6-15 (FY 2022 & FY 2023 Increase/Decrease for continuations) of MBR-1-03 and designated Budget Unit Decisions columns of MBR-1-03-A:

(D) SALARY:

THE SALARY REDUCTION IS \$62,499 WHICH IS THE AMOUNT OF THE VACANT PINS.

PROGRAM NARRATIVE

Program Data Collected in Accordance with the Mississippi Performance Budget and Strategic Planning Act of 1994
(To Accompany Form MBR-1-03)

Pat Harrison Waterway District

3 - Water Management

Name of Agency

Program Name

I. Program Description:

The purpose of this program is to assist with the planning, management, and operation of improvements to provide a reliable supply of quality water within the District.

II. Program Objective:

The objectives are to assist the State of Mississippi and the District's member counties and communities in the development and protection of potable water supply, both surface and subsurface. The District also engages in long-range planning and studies to assure adequate levels of quality water resources for the economic and social well-being of the region. We are currently working with Pickering Engineering, George County, and the Corps of Engineers to develop a lake to ensure an adequate water supply in the future. We are also in discussions with other member counties about the development of lakes in the northern part of our district.

III. Current program activities as supported by the funding in Columns 6-15 (FY 2022 & FY 2023 Increase/Decrease for continuations) of MBR-1-03 and designated Budget Unit Decisions columns of MBR-1-03-A:

(D) SALARY:

THE SALARY REDUCTION IS \$68,807 WHICH IS THE AMOUNT OF THE VACANT PINS.

Elements of Quality Program Design

For the Evaluation of Requests to Fund New Programs or New Activity in an Existing Program
(To Accompany Form MBR-1-03A)

PROGRAM PERFORMANCE MEASURES

Program Data Collected in Accordance with the Mississippi Performance Budget and Strategic Planning Act of 1994

Pat Harrison Waterway District (480-00)

1 - Recreation

Name of Agency

PROGRAM NAME

PROGRAM OUTPUTS: (This is the measure of the process necessary to carry on the goals and objectives of this program. This is the volume produced, i.e., how many people served, how many documents generated.)

	FY 2021 APPRO	FY 2021 ACTUAL	FY 2022 ESTIMATED	FY 2023 PROJECTED
1 Park Visitors	500,000.00	600,000.00	500,000.00	450,000.00
2 Park Income	5,000,000.00	2,972,952.00	2,480,000.00	2,232,000.00

PROGRAM EFFICIENCIES: (This is the measure of the cost, unit cost or productivity associated with a given outcome or output. This measure indicates linkage between services and funding, i.e., cost per investigation, cost per student or number of days to complete investigation.)

	FY 2021 APPRO	FY 2021 ACTUAL	FY 2022 ESTIMATED	FY 2023 PROJECTED
1 Personnel Cost per Visitor	4.50	2.59	3.11	3.46
2 Other Cost per Visitor	7.98	4.81	5.77	6.41

PROGRAM OUTCOMES: (This is the measure of the quality or effectiveness of the services provided by this program. This measure provides an assessment of the actual impact or public benefit of your agency's actions. This is the results produced, i.e., increased customer satisfaction by x% within a 12-month period, reduce the number of traffic fatalities due to drunk drivers within a 12-month period.

	FY 2021 APPRO	FY 2021 ACTUAL	FY 2022 ESTIMATED	FY 2023 PROJECTED
1 Increase (Decrease) in Park Visitors	500,000.00	100,000.00	100,000.00	150,000.00
2 Increase (Decrease) in Park Income	5,000,000.00	615,604.00	515,000.00	463,500.00

PROGRAM PERFORMANCE MEASURES

Program Data Collected in Accordance with the Mississippi Performance Budget and Strategic Planning Act of 1994

Pat Harrison Waterway District (480-00)

2 - Flood Control

Name of Agency

PROGRAM NAME

PROGRAM OUTPUTS: (This is the measure of the process necessary to carry on the goals and objectives of this program. This is the volume produced, i.e., how many people served, how many documents generated.)

	FY 2021 APPRO	FY 2021 ACTUAL	FY 2022 ESTIMATED	FY 2023 PROJECTED
1 Funded Projects (Grants)	40.00	25.00	40.00	40.00
2 Funded Emergency Works Projects (Grants)	4.00	7.00	5.00	5.00

PROGRAM EFFICIENCIES: (This is the measure of the cost, unit cost or productivity associated with a given outcome or output. This measure indicates linkage between services and funding, i.e., cost per investigation, cost per student or number of days to complete investigation.)

	FY 2021 APPRO	FY 2021 ACTUAL	FY 2022 ESTIMATED	FY 2023 PROJECTED
1 Funded Projects (Average Cost)	10,000.00	16,351.28	10,000.00	10,000.00
2 Funded Emergency Projects (Average Cost)	10,000.00	10,565.00	10,000.00	10,000.00

PROGRAM OUTCOMES: (This is the measure of the quality or effectiveness of the services provided by this program. This measure provides an assessment of the actual impact or public benefit of your agency's actions. This is the results produced, i.e., increased customer satisfaction by x% within a 12-month period, reduce the number of traffic fatalities due to drunk drivers within a 12-month period.)

	FY 2021 APPRO	FY 2021 ACTUAL	FY 2022 ESTIMATED	FY 2023 PROJECTED
1 Projects Completed (Grants)	40.00	10.00	10.00	10.00
2 Projects Completed Emergency Works Projects (Grants)	4.00	5.00	5.00	5.00

PROGRAM PERFORMANCE MEASURES

Program Data Collected in Accordance with the Mississippi Performance Budget and Strategic Planning Act of 1994

Pat Harrison Waterway District (480-00)

3 - Water Management

Name of Agency

PROGRAM NAME

PROGRAM OUTPUTS: (This is the measure of the process necessary to carry on the goals and objectives of this program. This is the volume produced, i.e., how many people served, how many documents generated.)

	FY 2021 APPRO	FY 2021 ACTUAL	FY 2022 ESTIMATED	FY 2023 PROJECTED
1 Low Flow Pascagoula & Drought Management Water Release Agreements	1.00	0.00	1.00	1.00
2 Water Sampling	4.00	29.00	29.00	29.00

PROGRAM EFFICIENCIES: (This is the measure of the cost, unit cost or productivity associated with a given outcome or output. This measure indicates linkage between services and funding, i.e., cost per investigation, cost per student or number of days to complete investigation.)

	FY 2021 APPRO	FY 2021 ACTUAL	FY 2022 ESTIMATED	FY 2023 PROJECTED
1 Low Flow Pascagoula & Drought Management Water Release Program	15,000.00	0.00	15,000.00	15,000.00
2 Water Quality Sampling	3,000.00	63.15	75.00	75.00

PROGRAM OUTCOMES: (This is the measure of the quality or effectiveness of the services provided by this program. This measure provides an assessment of the actual impact or public benefit of your agency's actions. This is the results produced, i.e., increased customer satisfaction by x% within a 12-month period, reduce the number of traffic fatalities due to drunk drivers within a 12-month period.

	FY 2021 APPRO	FY 2021 ACTUAL	FY 2022 ESTIMATED	FY 2023 PROJECTED
1 Low Flow Pascagoula & Drought Management Water Release Program	1.00	0.00	1.00	1.00
2 Water Quality Sampling	100.00	29.00	29.00	29.00

PROGRAM 3% GENERAL FUND REDUCTION AND NARRATIVE EXPLANATION

Pat Harrison Waterway District (480-00)

	Fiscal Year 2022 Funding			FY 2022 GF PERCENT REDUCED
	Total Funds	Reduced Amount	Reduced Funding Amount	

Program Name: (1) Recreation				
General				
State Support Special				
Federal				
Other Special	4,325,992		4,325,992	
TOTAL	4,325,992		4,325,992	

Narrative Explanation:

Program Name: (2) Flood Control				
General				
State Support Special				
Federal				
Other Special	1,100,982		1,100,982	
TOTAL	1,100,982		1,100,982	

Narrative Explanation:

Program Name: (3) Water Management				
General				
State Support Special				
Federal				
Other Special	298,677		298,677	
TOTAL	298,677		298,677	

Narrative Explanation:

Program Name: (99) Summary of All Programs				
General				
State Support Special				
Federal				
Other Special	5,725,651		5,725,651	
TOTAL	5,725,651		5,725,651	

PAT HARRISON WATERWAY DISTRICT MEMBERS

Pat Harrison Waterway District (480-00)

Name of Agency

A. Explain Rate and manner in which board members are reimbursed:

Board members are paid a \$40.00 per diem, as set by section 25-3-69 Mississippi Code of 1972, for District related activities. All travel is reimbursed at the rate established by the Mississippi State Office of Budget and Travel.

B. Estimated number of meetings FY 2022:

The Board meets twice monthly, once for committees and once for board. In addition, at least two (2) special meetings are anticipated during FY 2022.

C. Board Members	City, Town, Residence	Appointed By	Date Appointed	Length of Term
1. 7 George Smith	Wiggins, MS	Governor	01/01/2016	4 years
2. 11 Robin McCoy	Neely, MS	Greene County BOS	01/01/2018	4 years
3. 13 Bill Pennington	Collinsville, MS	Lauderdale County BOS	01/01/2019	4 years
4. 14 Ron Purvis	Wigging, MS	Stone County BOS	01/01/2019	4 years
5. 15 John Walker	Newton, MS	Newton County BOS	01/01/2019	4 years
6. 9 Bob Shoemake	Collins, MS	Covington County BOS	01/01/2019	4 years
7. 12 Larry Griffin	Soso, MS	Jones County BOS	01/01/2020	4 years
8. 3 Don Pittman	Taylorville, MS	Smith County BOS	01/01/2020	4 years
9. 4 Greg Pitts	Lucedale, MS	George County BOS	01/01/2020	4 years
10. 5 Rex Hiatt	Meridian, MS	Governor	01/01/2020	4 years
11. 6 Gerald Moore	Petal, MS	Governor	01/01/2020	4 years
12. 2 Kenny Mills	Waynesboro, MS	Wayne County BOS	01/01/2021	4 years
13. 8 James Buchanan	Quitman, MS	Clarke County BOS	01/01/2021	1 year

Identify Statutory Authority (Code Section or Executive Order Number)*

Code section 51-15-1 through 51-15-161, Laws of Mississippi, Mississippi Code 1972 annotated and adopted as the Official code of the State of Mississippi by the 1972 session of the Mississippi Legislature. 51-15-105

*If Executive Order, please attach copy.

**SCHEDULE B
CONTRACTUAL SERVICES**

Pat Harrison Waterway District (480-00)

Name of Agency

MINOR OBJECT OF EXPENDITURE	(1) Actual Expenses FY Ending June 30, 2021	(2) Estimated Expenses FY Ending June 30, 2022	(3) Requested for FY Ending June 30, 2023
A. Tuition, Rewards & Awards (61050xxx-61080xxx)			
61020 EMPLOYEE TRAINING	4,288	2,605	2,605
Total	4,288	2,605	2,605
B. Transportation & Utilities (61100xxx-61200xxx)			
61110 POSTAGE	7,431	8,136	8,136
61120 TELEPHONE - LOCAL		1,000	1,000
61130 TELEPHONE - NON LOCAL		100	100
61180 TRANSPORATION OF GOODS	4,250	4,557	4,557
61210 ELECTRICITY	471,910	585,815	585,815
61220 GAS		3,905	3,905
61230 WATER AND SEWER	164,768	113,085	113,085
61240 CABLE	9,944	16,924	16,924
61241 SATELLITE		7,811	7,811
Total	658,303	741,333	741,333
C. Public Information (61300xxx-6131xxxx)			
61250 CONTRACT JANITORIAL (COVID)	9,502		
61310 ADVERTISING	50	2,605	2,605
61320 FIREWORKS	27,000	12,000	12,000
61350 EXHIBITS AND DISPLAYS		260	260
Total	36,552	14,865	14,865
D. Rents (61400xxx-61490xxx)			
61420 BUILDING AND FLOOR SPACE		1,302	1,302
61440 OFFICE EQUIPMENT	6,026	5,599	5,599
61460 RENTAL OF OTHER EQUIPMENT	715	6,509	6,509
61480 CONFERENCE ROOMS		977	977
61490 OTHER RENTALS		3,256	3,256
Total	6,741	17,643	17,643
E. Repairs & Service (61500xxx)			
61500 GROUNDS, WALKS AND FENCES		12,367	12,367
61501 ASPHALT REPAIRS	11,500	247,809	247,809
61502 WATERLINE REPAIRS		12,639	12,639
61505 LAKE REPAIRS		214,863	214,863
61520 BUILDINGS	9,710	16,937	16,937
61521 PEST CONTROL	7,955	15,623	15,623

**SCHEDULE B
CONTRACTUAL SERVICES**

Pat Harrison Waterway District (480-00)

Name of Agency

MINOR OBJECT OF EXPENDITURE	(1) Actual Expenses FY Ending June 30, 2021	(2) Estimated Expenses FY Ending June 30, 2022	(3) Requested for FY Ending June 30, 2023
61522 AIR CONDITIONER REPAIRS	254	19,527	19,527
61530 MACHINERY AND FIELD EQUIPMENT REPAIRS		13,018	13,018
61540 MOTOR VEHICLE REPAIRS	5,351	23,433	23,433
61550 OFFICE EQUIPMENT AND FURNITURE		7,811	7,811
61580 SHOP EQUIPMENT	10,791	651	651
61590 MISCELLANEOUS EQUIPMENT		651	651
Total	45,561	585,329	585,329
F. Fees, Professional & Other Services (6161xxx-61699xxx)			
CASEY PRICE AND SCOTT ROBERTS MONITORING SERVICES AND BACKGROUND CHECKS			
CONTRACT EMPLOYEES CONTRACT WORKERS	769,463	311,335	311,335
ENGINEERING SERVICES ENGINEERING	25,680	16,753	16,753
HEALTH WORKS DRUG TESTING		1,000	1,000
JOLLY MATTHEWS BOARD ATTORNEY	13,516	9,787	9,787
WOLFE, MCDUFF & OPIE AUDIT SERVICES	6,400	21,000	21,000
Total	815,059	359,875	359,875
G. Other Contractual Services (61700xxx-61790xxx, 61900xxx)			
61700 LIABILITY POOL (TORT CLAIMS)	25,195	123,673	123,673
61710 INSURANCE AND FIDELITY BONDS	14,162	19,464	19,464
61718 BANK CHARGES	4,231	4,557	4,557
61720 MEMBERSHIP DUES	1,266	5,858	5,858
61740 GARBAGE COLLECTION	32,326	58,582	58,582
61795 RELOCATION EXPENSES		1,953	1,953
SALVAGE, DEMOLITION, AND REMOVAL 61735	8,740		
Total	85,920	214,087	214,087
H. Information Technology (61800xxx-61890xxx)			
61900 IS RELATED CHARGES		2,343	2,343
61902 PROFESSIONAL SERVICES - OUTSIDE VENDOR	4,190	522	522
61921 SOFTWARE ACQUISITION AND INSTALLATION	1,905	5,207	5,207
61927 INTERNET ACCESS	1,344		
61932 CELL PHONE SERVICE	12,217		
LINE CHARGES 61923	5,744		
Total	25,400	8,072	8,072
I. Other (61910xxx-61990xxx)			
61694 CREDIT CARD FEES	60,779	45,898	45,898

**SCHEDULE B
CONTRACTUAL SERVICES**

Pat Harrison Waterway District (480-00)

Name of Agency

MINOR OBJECT OF EXPENDITURE	(1) Actual Expenses FY Ending June 30, 2021	(2) Estimated Expenses FY Ending June 30, 2022	(3) Requested for FY Ending June 30, 2023
61972 COPY MACHINE	1,784	3,261	3,261
61976 MISC EQUIPMENT MAINTENANCE		260	260
61980 SOFTWARE MAINTENANCE		6,772	6,772
Total	62,563	56,191	56,191
Grand Total <i>(Enter on Line 1-B of Form MBR-1)</i>	1,740,387	2,000,000	2,000,000
Funding Summary:			
General Funds			
State Support Special Funds			
Federal Funds			
Other Special Funds	1,740,387	2,000,000	2,000,000
Total Funds	1,740,387	2,000,000	2,000,000

**SCHEDULE C
COMMODITIES**

Pat Harrison Waterway District (480-00)

Name of Agency

MINOR OBJECT OF EXPENDITURE	(1) Actual Expenses FY Ending June 30, 2021	(2) Estimated Expenses FY Ending June 30, 2022	(3) Requested for FY Ending June 30, 2023
A. Maintenance & Constr. Materials & Supplies (62000xxx, 62015xxx)			
62010 SAND	12,003	6,510	6,510
62020 ASPHALT	854	651	651
62030 CEMENT AND PLASTER	488	3,256	3,256
62050 STEEL AND OTHER METALS	1,528		
62060 SIGN AND SIGN MATERIAL	66	9,113	9,113
62070 PAINT	9,842	3,905	3,905
62080 CULVERTS	1,017	1,302	1,302
62090 OTHER MAINTENANCE MATERIALS		326	326
Total	25,798	25,063	25,063
B. Printing & Office Supplies & Materials (62010xxx, 62085xxx, 62100xxx, 62125xxx, 62400xxx)			
62110 PRINTING AND BINDING	6,152	3,905	3,905
62120 DUPLICATION		326	326
62130 OFFICE SUPPLIES AND MATERIAL	9,974	3,256	3,256
62131 CARTRIDGES	3,232		
62135 LAW ENFORCEMENT SUPPLIES			
62140 PAPER MATERRIALS		3,256	3,256
62150 MAPS, MANUALS, AND LIBRARY BOOKS		651	651
62160 OFFICE EQUIPMENT (NOT CAPITAL OUTLAY)	310	1,302	1,302
Total	19,668	12,696	12,696
C. Equipment Repair Parts, Supplies & Acces. (6205xxxx, 62072xxx, 62110xxx, 62115xxx, 62120xxx, 62130xxx)			
62090 OTHER EQUIPMENT REPAIR		6,509	6,509
62210 FUEL - GASOLINE	79,110	108,074	108,074
62211 FUEL - DIESEL	15,586	16,506	16,506
62212 FUEL - OTHER	1,769	5,403	5,403
62220 OIL & GREASE	3,797	1,302	1,302
62240 TIRES AND TUBES - AUTO		2,605	2,605
62241 TIRES AND TUBES - OTHER	10,268	4,557	4,557
62242 TIRES AND TUBES - TRACTOR	760	1,302	1,302
62243 TIRES AND TUBES - OFF ROAD	1,322	1,953	1,953
62250 EQUIPMENT REPARIS	67,213	5,207	5,207
62251 VEHICLE REPAIRS	24,330	7,811	7,811
62252 AIR CONDITIONER REPAIRS	3,325	10,414	10,414
62253 BATTERIES	2,500	326	326
62260 ACCESSORIES	2,426	651	651

**SCHEDULE C
COMMODITIES**

Pat Harrison Waterway District (480-00)

Name of Agency

MINOR OBJECT OF EXPENDITURE	(1) Actual Expenses FY Ending June 30, 2021	(2) Estimated Expenses FY Ending June 30, 2022	(3) Requested for FY Ending June 30, 2023
62280 SHOP SUPPLIES	13,277	1,041	1,041
62290 OTHER EQUIPMENT REPAIRS	2,762		
Total	228,445	173,661	173,661
D. Professional & Sci. Supplies and Materials (62025xxx, 62030xxx, 62070xxx, 62095xxx, 62105xxx, 6212xxxx)			
62130 LAB AND TESTING EQUIPMENT		195	195
62330 PHOTOGRAPHIC SUPPLIES		2,605	2,605
62390 OTHER PROFESSIONAL SUPPLIES		2,994	2,994
Total		5,794	5,794
E. Other Supplies & Materials (62005xxx, 62015xxx, 62020xxx, 62035xxx, 62040xxx, 62045xxx, 62060xxx, 62065xxx, 62075xxx-62080xxx, 62090xxx, 62115xxx, 62135xxx, 62140xxx, 62405xxx, 62415xxx, 62500xxx-62999xxx)			
62410 BUILDING SUPPLIES	40,321	57,066	57,066
62420 HARDWARE, PLUMBING & ELECTRICAL	79,207	52,814	52,814
62421 WATERLINE SUPPLIES		37,918	37,918
62428 LANDSCAPING		2,528	2,528
62430 SMALL TOOLS	4,537	3,905	3,905
62450 JANITORIAL	48,400	65,091	65,091
62460 WEARING APPAREL	5,337	7,811	7,811
62470 FOOD		3,905	3,905
62475 FOOD FOR BUSINESS MEETINGS	12,789	6,509	6,509
62480 FOOD FOR ANIMALS	130	651	651
62490 GREENHOUSE AND NURSERY SUPPLIES	502	3,256	3,256
62500 FERTILIZER		326	326
62501 FERTILIZER FOR LAKE MANAGEMENT		99,461	99,461
62510 POISONS	2,748	8,463	8,463
62540 LINENS		8,463	8,463
62555 IS EQUIPMENT REPAIR		651	651
62560 CAFETERIA SUPPLIES	1,251		
62571 MATTRESS AND SPRINGS		9,479	9,479
62590 OTHER MATERIALS AND SUPPLIES	16,039	22,132	22,132
62595 OTHER EQUIPMENT	30,978	14,320	14,320
62800 CREDIT CARD PURCHASES	60,179	62,641	62,641
UNIFORMS 62530	1,975		
Total	304,393	467,390	467,390
Grand Total <i>(Enter on Line 1-C of Form MBR-1)</i>	578,304	684,604	684,604

Funding Summary:

**SCHEDULE C
COMMODITIES**

Pat Harrison Waterway District (480-00)

Name of Agency

MINOR OBJECT OF EXPENDITURE	(1) Actual Expenses FY Ending June 30, 2021	(2) Estimated Expenses FY Ending June 30, 2022	(3) Requested for FY Ending June 30, 2023
General Funds			
State Support Special Funds			
Federal Funds			
Other Special Funds	578,304	684,604	684,604
Total Funds	578,304	684,604	684,604

**SCHEDULE D-1
CAPITAL OUTLAY
OTHER THAN EQUIPMENT**

Pat Harrison Waterway District (480-00)

Name of Agency

MINOR OBJECT OF EXPENDITURE	(1) Actual Expenses FY Ending June 30, 2021	(2) Estimated Expenses FY Ending June 30, 2022	(3) Requested for FY Ending June 30, 2023
-----------------------------	--	---	--

B. Buildings & Improvements (63100xxx)			
63230 ADDITION AND BETTERMENTS	47,442		
63250 Building Renovation		150,000	650,000
Total	47,442	150,000	650,000

Grand Total <i>(Enter on Line 1-D-1 of Form MBR-1)</i>	47,442	150,000	650,000
--	---------------	----------------	----------------

Funding Summary:			
General Funds			
State Support Special Funds			
Federal Funds			
Other Special Funds	47,442	150,000	650,000
Total Funds	47,442	150,000	650,000

**SCHEDULE D-2
CAPITAL OUTLAY EQUIPMENT**

Pat Harrison Waterway District (480-00)

Name of Agency

EQUIPMENT BY ITEM	Act. FY Ending June 30, 2021		Est. FY Ending June 30, 2022		Req. FY Ending June 30, 2023	
	No. of Units	Total Cost	No. of Units	Total Cost	No. of Units	Total Cost

C. Office Machines, Furniture, Fixtures, Equip. (63200xxx)						
OFFICE FURNITURE AND EQUIPMENT			1	506	1	506
AIR CONDITIONER	3	11,438	4	14,540	4	14,540
CAMERAS			1	252	1	252
Total		11,438		15,298		15,298

D. IT/IS Equipment (DP & Telecommunications) (63200xxx)						
IR/IS EQUIPMENT			1	2,945	1	2,945
TECHNOLOGY UPGRADES			1	6,600	1	6,600
Total				9,545		9,545

F. Other Equipment (63200xxx)						
LAWN MOWERS	1	4,714	8	32,000	8	32,000
PLAYGROUND EQUIPMENT			1	30,000	1	30,000
FRONT END LOADER			1	70,621	1	70,621
SHOP EQUIPMENT	1	1,143				
Total		5,857		132,621		132,621

Grand Total <i>(Enter on Line 1-D-2 of Form MBR-1)</i>		17,295		157,464		157,464
--	--	---------------	--	----------------	--	----------------

Funding Summary:						
General Funds						
State Support Special Funds						
Federal Funds						
Other Special Funds		17,295		157,464		157,464
Total Funds		17,295		157,464		157,464

**SCHEDULE D-3
PASSENGER/WORK VEHICLES**

Pat Harrison Waterway District (480-00)

Name of Agency

MINOR OBJECT OF EXPENDITURE	Vehicle Inventory June 30, 2021	Act. FY Ending June 30, 2021		Est. FY Ending June 30, 2022		Req. FY Ending June 30, 2023	
		No. of Units	Total Cost	No. of Units	Total Cost	No. of Units	Total Cost

A. Passenger & Work Vehicles (63300xxx)							
Vehicles Passenger Vehicles	50	2	72,270				
Total (A)	50	2	72,270				

GRAND TOTAL <i>(Enter on Line 1-D-3 of Form MBR-1)</i>			72,270				
--	--	--	---------------	--	--	--	--

Funding Summary:							
General Funds							
State Support Special Funds							
Federal Funds							
Other Special Funds			72,270				
Total Funds			72,270				

SCHEDULE D-4
WIRELESS COMMUNICATION DEVICES

Pat Harrison Waterway District (480-00)

Name of Agency

MINOR OBJECT OF EXPENDITURE	Device Inventory June 30, 2021	Act. FY Ending June 30, 2021		Est. FY Ending June 30, 2022		Req. FY Ending June 30, 2023	
		No. of Devices	Actual Cost	No. of Devices	Estimated Cost	No. of Devices	Requested Cost

Grand Total <i>(Enter on Line 1-D-4 of Form MBR-1)</i>				
--	--	--	--	--

Funding Summary:			
General Funds			
State Support Special Funds			
Federal Funds			
Other Special Funds			
Total Funds			

**SCHEDULE E
SUBSIDIES, LOANS & GRANTS**

Pat Harrison Waterway District (480-00)

Name of Agency

MINOR OBJECT OF EXPENDITURE	(1) Actual Expenses FY Ending June 30, 2021	(2) Estimated Expenses FY Ending June 30, 2022	(3) Requested for FY Ending June 30, 2023
A. School Grants to Counties & Municipalities (67020xxx, 67300xxx-67650xxx)			
64390 GRANTS TO COUNTIES	408,782	645,093	645,093
Total	408,782	645,093	645,093
E. Other, Transfers (67000xxx-67199xxx, 67998xxx, 68500xxx-68860xxx, 70045xxx-70080xxx, 80000xxx-80500xxx)			
78020 DRINKS FOR RESALE	1,585	2,089	2,089
78030 SNACKS FOR RESALE		596	596
78050 CAPS, ADAPTERS, ETC.		478	478
78060 ICE FOR RESALE	2,414	4,173	4,173
78061 CATFISH FOR RESALE		1,908	1,908
78062 FIREWOOD FOR RESALE	500	4,292	4,292
78120 STICKERS		358	358
78170 CORPS O & M		294,973	294,973
Total	4,499	308,867	308,867
Grand Total <i>(Enter on Line 1-E of Form MBR-1)</i>	413,281	953,960	953,960
Funding Summary:			
General Funds			
State Support Special Funds			
Federal Funds			
Other Special Funds	413,281	953,960	953,960
Total Funds	413,281	953,960	953,960

**NARRATIVE
2023 BUDGET REQUEST**

PAT HARRISON WATERWAY DISTRICT

The total budget authority requested by the Agency for fiscal year 2023 is \$5,575,297. This request is \$150,354 less than fiscal year 2022 funded level of \$5,725,651. This difference in funding is the value of our vacant pins of \$650,354, plus an increase of \$500,000 for improvements at the district parks. All expenditures will be funded with Special Revenue Funds and cash reserves. The individual changes are detailed below.

A. PERSONAL SERVICES:

1. Salaries, Wages & Fringe Benefits:

During FY 2023 a total of \$1,087,959 is requested in the Salary category. This request is \$650,354 less than the approved FY 2022 budget of \$1,738,313. The difference is the amount of the vacant pins.

In the FY 2022 budget, the Legislature authorized 68 pins for the District. The Agency does not request any additional pins for the FY 2023 budget year, but we do request the funding for the vacant pins be restored to the FY 2022 level.

b. Proposed Vacancy:

The vacancy rate during FY 2021 was 36% for full-time positions and 100% for part-time positions and for FY 2022 is estimated to be 36% for full-time pins and 100% for part-time pins. The vacancy rate during FY 2023 is projected to be 36% for full-time positions and 100% for part-time positions. The District may fill the part-time pins based on increased revenues for FY 2022 and FY 2023. **There are a total of 22 vacant pins, with 12 vacant for Recreation, 5 for Flood Control and 5 for Water Management.**

c. Per Diem:

Per Diem is paid to the members of the Pat Harrison Waterway District Board for attending official business meetings of the Waterway District and in the FY 2022 budget, per diem was approved in the amount of \$25,644. The agency is not requesting a change to this amount for FY 2023.

2. Travel:

A total of \$41,310 is requested in the Travel category for FY 2023. There is no change from the FY 2022 approved level of \$41,310.

a. Travel & Subsistence (In-State):

PAT HARRISON WATERWAY DISTRICT

These funds are used primarily to reimburse board members mileage when attending board meetings and other functions, and agency employees when they are required to travel in a personal vehicle.

b. Travel & Subsistence (Out-of-state):

The out-of-state travel will be for our executive director and board members to travel to Washington, D. C. to meet with the state congressional delegation. There may also be some training or educational seminars located out of state that employees will attend.

c. Travel & Subsistence (Out-of-country):

There are no funds requested in this area, as no out-of-country travel is planned.

B. CONTRACTUAL SERVICES:

A total of \$2,000,000 is requested in this category for FY 2023. This is the same as the FY 2022 approved budget of \$2,000,000. The FY 2023 request includes recurring expenses such as electricity, water & sewer, cable, satellite and many other recurring expenses. It also reflects additional cost to repave roads in the parks.

The detail minor object code changes within this category are as follows:

1. Tuition, Rewards & Awards:

A total of \$2,605 is requested in this area for FY 2023. There is no change from the FY 2022 approved budget of \$2,605.

2. Communications, Transportation & Utilities:

A total of \$741,333 is requested in this area for FY 2023. There is no change from the FY 2022 approved budget of \$741,333.

3. Public Information:

A total of \$14,865 is requested in this area for FY 2023. There is no change from the FY 2022 approved budget of \$14,865.

4. Rents:

A total of \$17,643 is requested in this area for FY 2023. There is no change from the FY 2022 approved budget of \$17,643.

5. Repairs & Service:

A total of \$585,329 is requested in this area for FY 2023. There is no change from the FY 2022 approved budget of \$585,329.

PAT HARRISON WATERWAY DISTRICT

6. Fees, Professional & Other Services:

A total of \$359,875 is requested in this area for FY 2023. There is no change from the FY 2022 approved budget of \$359,875.

7. Other Contractual Services:

A total of \$214,087 is requested in this area for FY 2023. This is the same as FY 2022 approved budget of \$214,087.

8. Data Processing:

A total of \$8,072 is requested in this area for 2023. There is no change from the FY 2022 approved budget of \$8,072.

9. Other:

A total of \$56,191 is requested in this area for FY 2023. There is no change from the FY 2022 approved budget of \$56,191.

C. Commodities:

A total of \$684,604 is requested in this category for FY 2023. There is no change from the FY 2022 funded budget of \$684,604. During FY 2023 the District is planning to complete infrastructure and maintenance projects totaling \$115,000, as follows:

Lime and Fertilize Lakes:	\$ 75,000
Electrical Renovations:	\$ 40,000

The detail minor object code changes within this category are as follows:

1. Maintenance & Const. Materials & Supplies:

A total of \$25,063 is requested in this area for FY 2023. There is no change from the FY 2022 approved budget of \$25,063.

2. Printing & Office Supplies & Materials:

A total of \$12,696 is requested in this area for FY 2023. There is no change from the FY 2022 approved budget of \$12,696.

3. Equipment Repair Parts, Supplies & Accessories:

PAT HARRISON WATERWAY DISTRICT

A total of \$173,661 is requested in this area for FY 2023. There is no change from the FY 2022 approved budget of \$173,661.

4. Professional & Scientific Supplies Materials:

A total of \$5,794 is requested in this area for FY 2023. There is no change from the FY 2022 approved budget of \$5,794.

5. Other Supplies and Materials:

A total of \$467,390 is requested in this area in FY 2023. There is no change from the FY 2022 approved budget of \$467,390.

6. Credit Card Fees and Procurement Card Purchases

Our policy requires that a purchase requisition be filed at the district office and a purchase order issued prior to a purchase being made. An exception is made when the district office is closed at night and on weekends. The parks are allowed to make necessary purchases using procurement cards during those hours. They are required to send in a requisition for each purchase, stating that the card was used, and the requisition, invoice, and card statement are reconciled at the end of the card cycle by our accounts payable department. In addition, there are a few vendors (Walmart, Sam's, and some dollar stores) that do not accept purchase orders and we use procurement cards for those vendors at any time. A purchase requisition is issued prior to the purchase being made and is approved by the district office. These are also reconciled prior to payment.

We accept credit cards for cabin and campsite rental, boat launch, entrance fees, and all other services at both the district office and at each of our parks except Dunn's Falls. We are charged a fee by our credit card processor each time a transaction is made. The credit card fees are based on a percentage of the sale as well as a per transaction cost. Our recreation revenue is \$2,500,000 and about seventy percent of that revenue is received through credit card transactions. The credit card fees are \$40,000 for FY 2022 which represents a rate of less than 2.5%.

D. Capital Outlay:

1. Capital Outlay Other than Equipment:

A total of \$650,000 is requested in this category for FY 2023. This is a \$500,000 increase over the FY 2022 approved budget of \$150,000. During FY 2023 the District is requesting authority to complete the following infrastructure and maintenance projects totaling \$650,000:

PAT HARRISON WATERWAY DISTRICT

Renovation of Park Facilities \$150,000

Construction of Horse Trail \$500,000

The district needs to renovate facilities at most of our parks. These renovations would include the cabins, campsites, and roads, as well as park office buildings. The district also plans on remodeling lodge halls at several of our parks over the next several years. These renovations will take place over several years.

The detail minor object code changes within this category are as follows:

63250 Buildings \$ 650,000

2. Capital Outlay Equipment:

A total of \$157,464 is requested in this category for FY 2023. This is the same as requested for FY 2022 approved budget of \$157,464. During FY 2023 the District plans to purchase the following equipment items which total \$157,464:

- a. No funds are requested in this area
- b. No funds are requested in this area
- c. Office Machines, Furniture, Fixtures, Equipment:

A total of \$15,298 is requested in this category for FY 2023. There is no change from the FY 2022 approved budget of \$15,298. During FY 2023 the Agency plans to purchase new furniture for its cabins and additional photo equipment for its parks. The district is also in the process of updating the interior of our cabins.

d. IS Equipment

A total of \$9,545 is requested in this category for FY 2023. There is no change from the FY 2022 approved budget of \$9,545.

No funds are requested in this area.

e. Equipment-Lease Purchase:

No funds are requested in this area.

PAT HARRISON WATERWAY DISTRICT

f. Other Equipment:

A total of \$132,621 is requested in this category for FY 2023. There is no change from the FY 2022 approved budget of \$132,621. The budget request in this category is to replace various items in the District's eight (8) Water Parks that are broken or badly worn. A detail list of the items to be purchased is as follows:

1	Lawn Mowers	\$ 32,000
1	Playground Equipment	\$ 30,000
1	Frontend Loader	\$ 70,621

3. Vehicles:

The District is requesting no additional vehicles for FY 2023. No new vehicles were requested in the FY 2022 budget. There are currently fifty vehicles in the PHWD inventory.

4. Wireless Comm. Devices:

No funding is requested in this area for FY 2023.

E. Subsidies, Loans & Grants:

A total of \$953,960 is requested in this category for FY 2023. There is no change from the FY 2022 budget of \$953,960. These funds are requested to fund Flood Control and Water Management Grants to the member counties, and to purchase resale items. There are also amounts associated with the operations and maintenance at Okatibbee Lake. These funds are being requested in the following sub-categories and detail minor object codes:

1. Grants to Counties & Others:

A total of \$645,093 is requested in this sub-category and the funds are being requested in the following detail minor object codes:

64390	Grants to Counties	\$ 645,093
-------	--------------------	------------

The request in this category is the same as was approved in the FY 2022 budget.

2. Debt Service:

PAT HARRISON WATERWAY DISTRICT

This district has paid all outstanding debt with the Corps of Engineers. The district had been paying \$49,973 annually on the water purchase agreement at Okatibbee Lake. The final annual installment was made in September 2017. The district is requesting that the \$49,973 Corps payment be allocated to the O & M (Operations and Maintenance) to address erosion issues that exist at Okatibbee Lake. This erosion has cost us the use of a day use area and pavilion. We are also in danger of losing access to 4 cabins and 5 campsites unless these issues are addressed in the near term. We are currently negotiating with the Corps concerning this matter, but it appears we will be responsible for all or part of any erosion control measures.

3. Other:

A total of \$308,867 is requested in the sub-category for FY 2023 which is the same as or FY 2022 request of \$308,867.

The following detail minor object codes are included:

65050	Bank Service Charge	\$	896
78020	Drinks for Resale	\$	1,193
78030	Snack for Resale	\$	596
78050	Caps, Adapters, Etc.	\$	478
78060	Ice for Resale	\$	4,173
78061	Catfish for Resale	\$	1,908
78062	Firewood for Resale	\$	4,292
78120	Inspection Stickers	\$	269
78150	Boat Registration	\$	89
78170	Corps O & M Okatibbee	\$	294,973

**OUT-OF-STATE TRAVEL
FISCAL YEAR 2023**

Pat Harrison Waterway District (480-00)

Name of Agency

Note: All expenditures recorded on this form must be totaled and said total must agree with the out-of-state travel amount indicated for FY 2021 on Form Mbr-1, line 1.A.2.b.

Employee's Name	Destination	Purpose	Travel Cost	Funding Source
-----------------	-------------	---------	-------------	----------------

Total Out of State Cost

FEES, PROFESSIONAL AND OTHER SERVICES

Pat Harrison Waterway District (480-00)

Name of Agency

TYPE OF FEE AND NAME OF VENDOR	Retired w/ PERS	(1) Actual Expenses FY Ending June 30, 2021	(2) Estimated Expenses FY Ending June 30, 2022	(3) Requested Expenses FY Ending June 30, 2023	Fund Source
WOLFE, MCDUFF & OPIE AUDIT SERVICES					
WOLFE, MCDUFF & OPIE/AUDIT SERVICES					
<i>Comp. Rate: \$150.00</i>	N	6,400	21,000	21,000	SPECIAL FUNDS
Total WOLFE, MCDUFF & OPIE AUDIT SERVICES		6,400	21,000	21,000	
JOLLY MATTHEWS BOARD ATTORNEY					
JOLLY MATTHEWS/BOARD ATTORNEY					
<i>Comp. Rate: \$125.00 PER HOUR</i>	Y	13,516	9,787	9,787	SPECIAL FUNDS
Total JOLLY MATTHEWS BOARD ATTORNEY		13,516	9,787	9,787	
HEALTH WORKS DRUG TESTING					
HEALTH WORKS/DRUG TESTING					
<i>Comp. Rate: \$50 PER TEST</i>	N		1,000	1,000	SPECIAL FUNDS
Total HEALTH WORKS DRUG TESTING			1,000	1,000	
ENGINEERING SERVICES ENGINEERING					
DANNY NELSON/ENGINEERING					
<i>Comp. Rate: \$50 PER HOUR</i>	N		3,000	3,000	SPECIAL FUNDS
PICKERING FIRM/ENGINEERING					
<i>Comp. Rate: \$125 PER HOUR</i>	N	25,680	13,753	13,753	SPECIAL FUNDS
Total ENGINEERING SERVICES ENGINEERING		25,680	16,753	16,753	
CONTRACT EMPLOYEES CONTRACT WORKERS					
Amanda Brewer/Office Clerk					
<i>Comp. Rate: 8.5</i>		18,397	17,080	17,080	special
Angel Gavin/Waterslide Attendant					
<i>Comp. Rate: 8</i>		548			special
Angela Nichols/Housekeeping					
<i>Comp. Rate: 8</i>		1,042			special
Anthony Blackman/Maintenance					
<i>Comp. Rate: 9</i>		16,695	16,884	16,884	special
Antonio Jackson/Maintenance					
<i>Comp. Rate: 12.93</i>	Y	13,131	13,305	13,305	special
Auldrich Rayborn/Maintenance					
<i>Comp. Rate: 10</i>		3,830			special
Austin Arceneaux/Maintenance					
<i>Comp. Rate: 8</i>		1,852			special
Austin Corley/Maintenance					
<i>Comp. Rate: 8</i>		7,184			special
Braden Brewer/Lifeguard					
<i>Comp. Rate: 10</i>		1,095			special
Bradford Lee/Security					

FEES, PROFESSIONAL AND OTHER SERVICES

Pat Harrison Waterway District (480-00)

Name of Agency

TYPE OF FEE AND NAME OF VENDOR	Retired w/ PERS	(1) Actual Expenses FY Ending June 30, 2021	(2) Estimated Expenses FY Ending June 30, 2022	(3) Requested Expenses FY Ending June 30, 2023	Fund Source
Comp. Rate: 12.74	Y	532			special
Brandi Sullivan/Housekeeping					
Comp. Rate: 8		14,490			special
Breanna Laidner/Lifeguard					
Comp. Rate: 9		860			special
Brian Maddox/Lifeguard					
Comp. Rate: 10		6,141	6,236	6,236	special
Brianna Lee/Lifeguard					
Comp. Rate: 10		1,100			special
Brodie Reid/Maintenance					
Comp. Rate: 8		1,280			special
Cassidy Williams/Lifeguard					
Comp. Rate: 10		1,218			special
Cathy Craig/Housekeeping					
Comp. Rate: 8.5		17,439	14,173	14,173	special
Chad Mixon/Maintenance					
Comp. Rate: 9		15,687			special
Charles Jasper/Maintenance					
Comp. Rate: 9	Y	520			special
Chelsey Smith/Clerk					
Comp. Rate: 8		13,901			special
Christopher Sykes/Maintenance					
Comp. Rate: 9		12,243			special
Clinton Cobb/Lifeguard					
Comp. Rate: 8		546			special
Cody Spradley/Maintenance					
Comp. Rate: 9		2,282			special
Daniel Cronley/Lifeguard					
Comp. Rate: 9		871			special
David Day/Ranger					
Comp. Rate: 9		16,936	17,107	17,107	special
Dawson Hamburg/Maintenance					
Comp. Rate: 10		5,064			special
Deanna Beach/Housekeeping					
Comp. Rate: 8		24			special
Delores Allen/Housekeeping					
Comp. Rate: 8		1,504			special
Dominique Norton/Lifeguard					
Comp. Rate: 10		2,181	490	490	special
Donald Utsey/Maintenance					
Comp. Rate: 9	Y	711			special
Donna Miles/Ranger					
Comp. Rate: 9		13,812			special
Eddie Davis/Maintenance					
Comp. Rate: 9	Y	781			special
Elise Rester/Housekeeping					

FEES, PROFESSIONAL AND OTHER SERVICES

Pat Harrison Waterway District (480-00)

Name of Agency

TYPE OF FEE AND NAME OF VENDOR	Retired w/ PERS	(1) Actual Expenses FY Ending June 30, 2021	(2) Estimated Expenses FY Ending June 30, 2022	(3) Requested Expenses FY Ending June 30, 2023	Fund Source
Comp. Rate: 8 Elizabeth Miller/Board Secretary		1,836			special
Comp. Rate: 16.75 Enright Chandler/Security		26,329	26,164	26,164	special
Comp. Rate: 15.58 Evelyn Davis/Concession	Y	16,249	16,320	16,320	special
Comp. Rate: 9 Fanceey Smith/Housekeeping		173			special
Comp. Rate: 8 Gabriel Scrimshire/Maintenance		3,192			special
Comp. Rate: 8 George DeCoux/Comptroller		6,516			special
Comp. Rate: 28.75 Gunner Lee/Maintenance	Y	29,986	29,986	29,986	special
Comp. Rate: 8 Hailey Marquette/Waterslide Attendant		400			special
Comp. Rate: 8 Haley Brewer/Housekeeping		716			special
Comp. Rate: 8 Harlie Waddle/Waterslide Attendant		1,704			special
Comp. Rate: 8 Harry Barnett/Security		860			special
Comp. Rate: 12 Jacqueline Graham/Clerk		5,853			special
Comp. Rate: 9.30 Jared Pitts/Maintenance		298			special
Comp. Rate: 9 Jaycee Isit/Waterslide Attendant		720			special
Comp. Rate: 8 Jeffrey Hicks/Patrol Officer		474			special
Comp. Rate: 12 Jeremy Thomas/Maintenance		9,630			special
Comp. Rate: 8 Jerry Blalock/Maintenance		12,330			special
Comp. Rate: 8 Jimmie S Smith/Lifeguard		2,162			special
Comp. Rate: 11 John Blackwell/Maintenance	Y	6,463	2,129	2,129	special
Comp. Rate: 8.5 Johnnette Spangler/Office Clerk		9,603	10,306	10,306	special
Comp. Rate: 8 Johnny Malone/Office Clerk		9,482	8,808	8,808	special
Comp. Rate: 13 Jonathan Prince/Maintenance		27,040	22,720	22,720	special
Comp. Rate: 10 Joseph Corbit/Maintenance		2,260			special

FEES, PROFESSIONAL AND OTHER SERVICES

Pat Harrison Waterway District (480-00)

Name of Agency

TYPE OF FEE AND NAME OF VENDOR	Retired w/ PERS	(1) Actual Expenses FY Ending June 30, 2021	(2) Estimated Expenses FY Ending June 30, 2022	(3) Requested Expenses FY Ending June 30, 2023	Fund Source
Comp. Rate: 8 Joshua Cupit/Maintenance		13,094			special
Comp. Rate: 8 Joshua Hamburg/Maintenance		7,016			special
Comp. Rate: 8 Judy Mryick/Housekeeping		13,976			special
Comp. Rate: 8 Kaitlin Crosby/Lifeguard		8,124			special
Comp. Rate: 10 Kalee Wester/Housekeeping		1,379	310	310	special
Comp. Rate: 8 Kandes Perry/Ranger		4,154			special
Comp. Rate: 10 Kasey McIlwain/Housekeeping		3,605			special
Comp. Rate: 8 Kelly Harris/Housekeeping		1,656			special
Comp. Rate: 8 Kristy Kerlin/Waterslide Attendant		448			special
Comp. Rate: 8 Lauren Higgs/Clerk		182			special
Comp. Rate: 9 Lindsey Philyaw/Office Clerk		648			special
Comp. Rate: 8 Lynda Hamilton/Clerk		16,446	15,422	15,422	special
Comp. Rate: 8 Makayla Cobb/Lifeguard		1,086			special
Comp. Rate: 10 Marcie Wilson/Reservations		1,982	538	538	special
Comp. Rate: 8 Marian Phillips/Concession		13,638	3,508	3,508	special
Comp. Rate: 8 Mary Forman/Maintenance		1,415			special
Comp. Rate: 9 Mary Gilbert/Clerk		15,344			special
Comp. Rate: 9.50 Matthew Chappell/Maintenance		10,445			special
Comp. Rate: 8 Maurice Gilmore/Housekeeping		160			special
Comp. Rate: 10 Melissa Neese/Office Clerk		18,742	17,750	17,750	special
Comp. Rate: 8 Michael Recrico/Lifeguard		16,963	14,844	14,844	special
Comp. Rate: 9 Miranda Beech/Housekeeping		806			special
Comp. Rate: 8 Natalie Husley/Waterslide Attendant		10,362			special

FEES, PROFESSIONAL AND OTHER SERVICES

Pat Harrison Waterway District (480-00)

Name of Agency

TYPE OF FEE AND NAME OF VENDOR	Retired w/ PERS	(1) Actual Expenses FY Ending June 30, 2021	(2) Estimated Expenses FY Ending June 30, 2022	(3) Requested Expenses FY Ending June 30, 2023	Fund Source
Comp. Rate: 8 Nathanael Trayner/Lifeguard		1,096	632	632	special
Comp. Rate: 10 Nelson Ainsworth/Maintenance		865	1,090	1,090	special
Comp. Rate: 9 Nomie Fairley/Waterslide Attendant		2,340			special
Comp. Rate: 8 Paul Rutledge/Maintenance		898	572	572	special
Comp. Rate: 10 Rachel Clemts/Housekeeping		3,035			special
Comp. Rate: 8 Rebecca Ann Federick/Housekeeping		16,573			special
Comp. Rate: 8 Renita Lanier/Office Clerk		16,353	16,339	16,339	special
Comp. Rate: 8.5 Rickey Windham/Maintenance		18,080	16,807	16,807	special
Comp. Rate: 9 Robert Arrington/Maintenance		68			special
Comp. Rate: 8 Robert Brady/Maintenance		320			special
Comp. Rate: 9 Robert Hillman/Security		5,304			special
Comp. Rate: 12 Robert Reed/Maintenance		144			special
Comp. Rate: 9 Roger Gardner/Maintenance		16,151			special
Comp. Rate: 8 Rose Pace/Waterslide Attendant		640			special
Comp. Rate: 8 Rylei Roch/Lifeguard		690			special
Comp. Rate: 9 Sandra Ainsworth/Housekeeping		835			special
Comp. Rate: 8 Santanna Trotter/Office Clerk		14,960			special
Comp. Rate: 8 Shana Bourgeois/Lifeguard		866			special
Comp. Rate: 10 Shon Smith/Maintenance		1,140	700	700	special
Comp. Rate: 12 Starmekia McNeil/Housekeeping		24,960	2,412	2,412	special
Comp. Rate: 8 Thomas Arceneaux/Maintenance		9,502			special
Comp. Rate: 8 Thomas Ryan Ling/Maintenance		16,294			special
Comp. Rate: 8 Timothy Hill/Security		9,972			special

FEES, PROFESSIONAL AND OTHER SERVICES

Pat Harrison Waterway District (480-00)

Name of Agency

TYPE OF FEE AND NAME OF VENDOR	Retired w/ PERS	(1) Actual Expenses FY Ending June 30, 2021	(2) Estimated Expenses FY Ending June 30, 2022	(3) Requested Expenses FY Ending June 30, 2023	Fund Source
Comp. Rate: 11.5 TJ Lee/Security		10,793	5,313	5,313	special
Comp. Rate: 8.5 Toby Sykes/Maintenance		16,057	13,390	13,390	special
Comp. Rate: 8 Tony Cooley/Contract Manager		6,546			special
Comp. Rate: 10 Triston Hill/Lifeguard		4,909			special
Comp. Rate: 9 Tyrone Dye/Maintenance		956			special
Comp. Rate: 13.45 Walter Roberts/Maintenance		11,146			special
Comp. Rate: 10 William Barrett/Maintenance		8,230			special
Comp. Rate: 11 William Dedeaux/Lifeguard		3,068			special
Comp. Rate: 10 William Germany/Maintenance		1,133			special
Comp. Rate: 12.50 Zachary Bond/Lifeguard		7,000			special
Comp. Rate: 10 Zoe Farve/Office Clerk		1,263			special
Comp. Rate: 8		7,432			special
Total CONTRACT EMPLOYEES CONTRACT WORKERS		769,463	311,335	311,335	
GRAND TOTAL		815,059	359,875	359,875	

VEHICLE PURCHASE DETAILS

Pat Harrison Waterway District (480-00)

Name of Agency

Year	Model	Person(s) Assigned To	Vehicle Purpose/Use	Replacement Or New?	FY2023 Req. Cost
-------------	--------------	------------------------------	----------------------------	--------------------------------	-----------------------------

TOTAL VEHICLE REQUEST

**VEHICLE INVENTORY
AS OF JUNE 30, 2021**

Pat Harrison Waterway District (480-00)

Name of Agency _____

Vehicle Type	Vehicle Description	Model Year	Model	Person(s) Assigned To	Purpose/Use	Tag Number	Mileage on 6-30-2021	Average Miles per Year	Replacement Proposed	
									FY2022	FY2023
W	Dump Truck	2007	International 4400	Curtis Export	Maintenance (11125)	13697	118,436	6,091		
W	Pickup	2000	Dodge 1500	Out of Commission	OKWP (91113)	12755	118,956	5,948		
W	Pickup	2001	Dodge 2500	Out of Commission	TCWP (9364)	16947	212,741	11,088		
W	Pickup	2003	Chevy 2500	David Day	BCWP (9553)	23401	205,611	11,560		
W	Pickup	2004	Ford F250	Out of Commission	OKWP (9636)	28104	193,125	12,070		
W	Pickup	2004	GMC 1/2 Ton	Out of Commission	FCWP (9637)	28158	187,263	11,704		
W	Pickup	2004	GMC 1/2 Ton	Tyrone Dye	ACWP (9671)	29675	117,751	6,988		
W	Pickup	2005	GMC 1/2 Ton	Thomas Arceneaux	FCWP (9764)	31851	116,546	7,738		
W	Pickup	2005	Ford Ranger	John Blackwell	BCWP (9806)	32430	91,555	6,010		
W	Pickup	2005	Ford Ranger	Dusty Reed	TCWP (9808)	32431	88,813	5,497		
W	Pickup	2006	Ford Ranger	Maurice Gilmore	MCWP (9993)	37191	119,149	8,042		
W	Pickup	2006	Ford Ranger	Sandy Ainsworth	BCWP (9994)	37190	84,062	5,692		
W	Pickup	2006	Ford F250	Tony Cooley	MCWP (10141)	40910	348,301	23,807		
W	Pickup	2007	Ford F 150	Ranger	ACWP (10143)	41088	92,501	6,850		
W	Pickup	2007	Ford Ranger	Terri Arnold	FCWP (10148)	41349	124,386	9,321		
W	Pickup	2007	Ford Ranger	Out of Commission	OKWP (10149)	41348	100,276	7,325		
W	Pickup	2007	Ford Ranger	Becky Fedrick	TCWP (10152)	51278	95,714	7,171		
W	Pickup	2007	Ford Ranger	Martha Palmer	ACWP (10153)	41344	34,707	2,581		
W	Pickup	2008	Ford Ranger	Joey Carnathan	MCWP (10328)	45698	100,206	7,307		
W	Pickup	2008	Ford Ranger	Sabrina Pullen	FCWP (10329)	45697	63,739	5,014		
W	Pickup	2008	Ford Ranger	Richard Barrett	FCWP (10330)	45695	270,862	21,250		
W	Pickup	2008	Ford Ranger	Michael Dennis	ACWP (10331)	45964	73,908	4,864		
W	Pickup	2008	Ford Ranger	Maintenance	OLWP (10332)	45696	92,343	7,553		
W	Pickup	2008	Ford F 150	Pam Engle	TCWP (10336)	45948	108,828	8,597		
W	Pickup	2008	Ford F 150	Rusty Alexander	OLWP (10337)	45949	247,457	19,650		
W	Chevy Van	2004	Ventura	Miranda Beech	FCWP (10355)	47076	190,915	11,331		
W	Car	2009	Impala	Anthony Golson	DO (10389)	48215	228,705	20,265		

Vehicle Type: (P)assenger/(W)ork

**VEHICLE INVENTORY
AS OF JUNE 30, 2021**

Pat Harrison Waterway District (480-00)

Name of Agency

Vehicle Type	Vehicle Description	Model Year	Model	Person(s) Assigned To	Purpose/Use	Tag Number	Mileage on 6-30-2021	Average Miles per Year	Replacement Proposed	
									FY2022	FY2023
W	Pickup	2009	Ford Ranger	Shon Smith	OKWP (10399)	49062	106,821	9,255		
W	Pickup	2009	Ford Ranger	Thomas Arceneaux	FCWP (10400)	49063	96,967	8,729		
W	Pickup	2009	Ford Ranger	Patty Bond	MCWP (10401)	49064	122,640	10,768		
W	Pickup	2009	Ford Ranger	Mary Foreman	DCWP (10402)	49065	95,795	8,003		
W	Pickup	2009	Ford Ranger	Robert Brady	FCWP (10403)	46066	115,122	10,381		
W	Pickup	2009	Ford F-150	Josh Todd	Maintenance (10431)	50527	154,498	12,762		
W	Pickup	1991	Topkick Tandem	Tim Rouse	Maintenance (10475)	1540	205,964	5,258		
W	Pickup	2010	Ford Ranger	Johnny Malone	OLWP (10501)	54370	78,164	7,801		
W	Pickup	2010	Ford Ranger	Dennis Sanford	OLWP (10503)	54372	106,007	10,170		
W	Pickup	2010	Ford Ranger	Out of Commission	FCWP (10504)	54373	50,306	4,704		
W	Pickup	2011	Ford Ranger	Enright Chandler	FCWP (10578)	57123	96,363	9,713		
W	Pickup	2011	Ford Ranger	T.J. Lee	FCWP (10579)	57122	104,827	9,711		
W	Pickup	2011	Ford F-150	Tony Jackson	DO (10581)	57130	126,395	12,617		
W	Pickup	2012	Chevy Silverado	D.J. McKean	Maintenance (10490)	54126	379,874	43,724		
W	Pickup	2012	Ford F-150	Tim Rouse	Maintenance (10681)	60733	279,612	30,981		
W	Pickup	2012	Ford F-150	TC Dinwiddie	BCWP (10682)	60734	78,189	8,302		
W	Pickup	2012	Ford F-150	Joe Smith	FCWP (10696)	61964	198,560	21,519		
W	Tractor Trailer	1991	Ford	Timmy Rouse	Maintenance (10737)	64321	107,565	3,168		
W	Pickup	2007	Ford Ranger	Jared Pitts	TCWP (10150)	41345	85,080	6,315		
W	Pickup	2016	Ford F-150	Allen Wright	DO (10851)	73277	122,625	24,402		
W	Pickup	2016	Ford F-150	Mike Ling	Maintenance (10852)	73276	201,401	42,760		
W	Pickup	2018	Dodge	Hiram Boone	DO (10986)	81979	110,637	35,753		
W	Pickup	2021	Ford F 350	Larry Henderson	Maintenance (11118)	88523	18,299	0		

**VEHICLE POOL MEMBER LIST
2023 BUDGET REQUEST**

Pat Harrison Waterway District (480-00)

Name of Agency

Pat Harrison Waterway District assigns a person to each vehicle.

**PRIORITY OF DECISION UNITS
FISCAL YEAR 2023**

Pat Harrison Waterway District (480-00)

Name of Agency

Program	Decision Unit	Object	Amount
Priority # 1			
Program # 1: Recreation			
FLINT CREEK HORSE TRAIL AND MAYNOR CREEK CAMPSITE REMOVATION			
OTE			500,000
Totals			<u>500,000</u>
Other Special Funds			500,000
SALARY			
Salaries			(519,048)
Totals			<u>(519,048)</u>
Other Special Funds			(519,048)
Program # 2: Flood Control			
SALARY			
Salaries			(62,499)
Totals			<u>(62,499)</u>
Other Special Funds			(62,499)
Program # 3: Water Management			
SALARY			
Salaries			(68,807)
Totals			<u>(68,807)</u>
Other Special Funds			(68,807)

Summary of 3% General Fund Program Reduction to FY 2022 Appropriated Funding by Major Object

Pat Harrison Waterway District (480-00)

Name of Agency _____

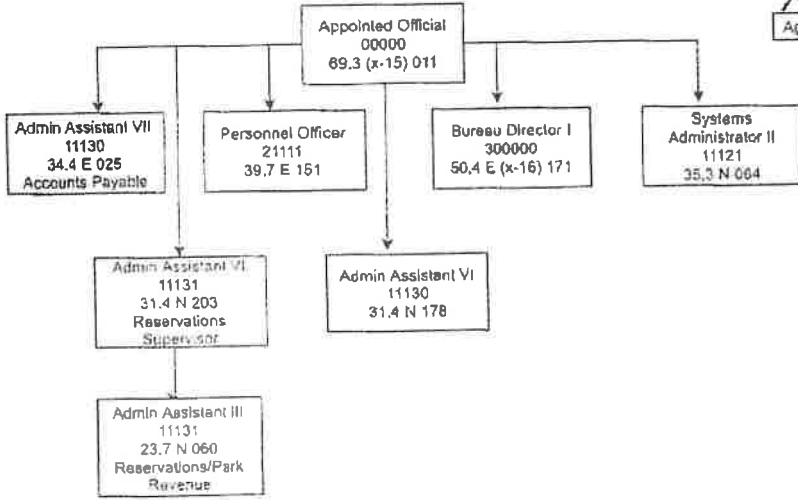
Major Object	FY2022 General Fund Reduction	EFFECT ON FY2022 STATE SUPPORT SPECIAL FUNDS	EFFECT ON FY2022 FEDERAL FUNDS	EFFECT ON FY2022 OTHER SPECIAL FUNDS	TOTAL 3% REDUCTIONS
SALARIES, WAGES, FRINGE					
TRAVEL					
CONTRACTUAL					
COMMODITIES					
OTHER THAN EQUIPMENT					
EQUIPMENT					
VEHICLES					
WIRELESS COMM. DEVS.					
SUBSIDIES, LOANS, ETC					
TOTALS					

Pat HARRISON WATERWAY DISTRICT
ORGANIZATIONAL CHART
FY2022
PROPOSED

Agency: 90480
05/27/2021
FY2022
Page 1 of 12

DISTRICT OFFICE

Juan Pome
Agency Authorized Signature

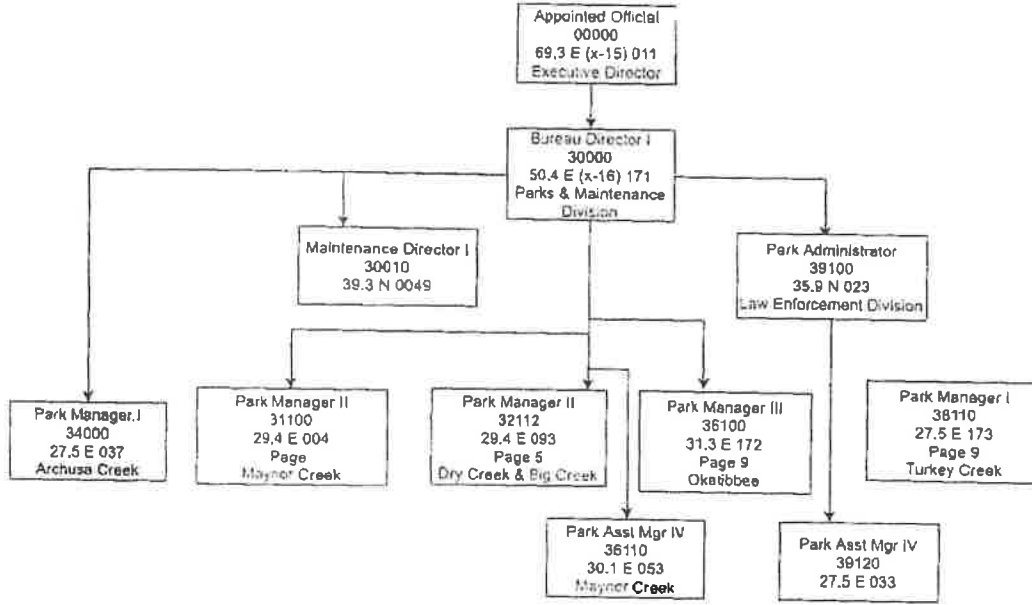


Pat HARRISON WATERWAY DISTRICT
 ORGANIZATIONAL CHART
 FY2022
 PROPOSED

Agency: 90480
 05/27/2021
 FY2022
 Page 2 of 12

MANAGERS

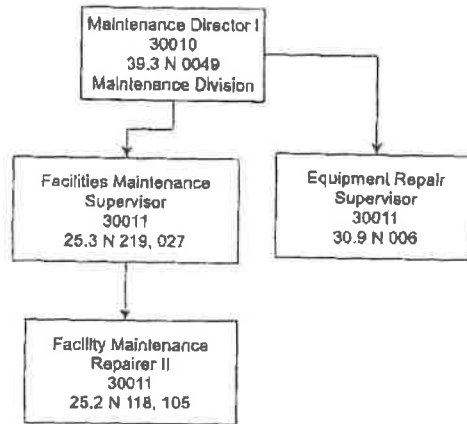
Hiram Brown
 Agency Authorized Signature



Pat HARRISON WATERWAY DISTRICT
ORGANIZATIONAL CHART
FY2022
PROPOSED

Agency: 90480
07/22/2020
FY2022
Page 3 of 12

Maintenance Crew

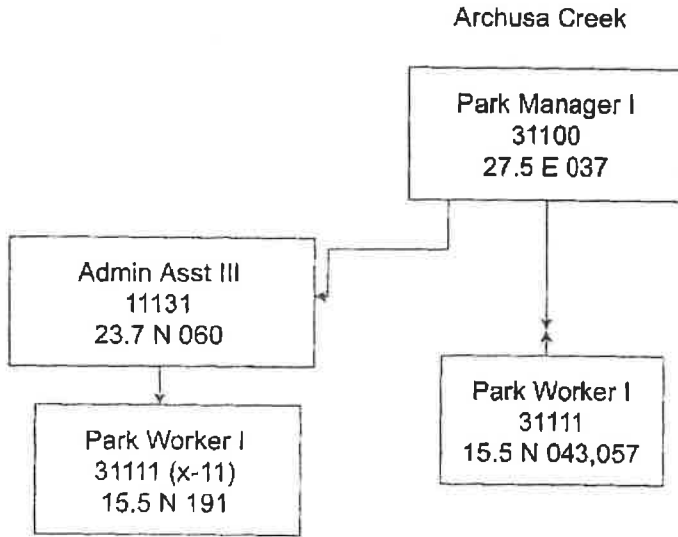


Haan Bone
Agency Authorized Signature

Pat HARRISON WATERWAY DISTRICT
ORGANIZATIONAL CHART
FY2022
Proposed

Agency: 90480
05/27/2021
FY2022
Page 4 of 12

William Dorn
Agency Authorized Signature

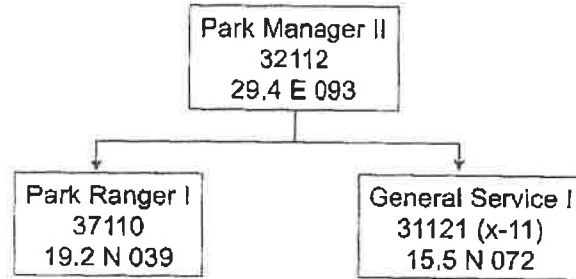


Pat HARRISON WATERWAY DISTRICT
ORGANIZATIONAL CHART
FY2022
PROPOSED

Agency: 90480
06/27/2021
FY2022
Page 5 of 12

Dry Creek

Heather Brown
Agency Authorized Signature

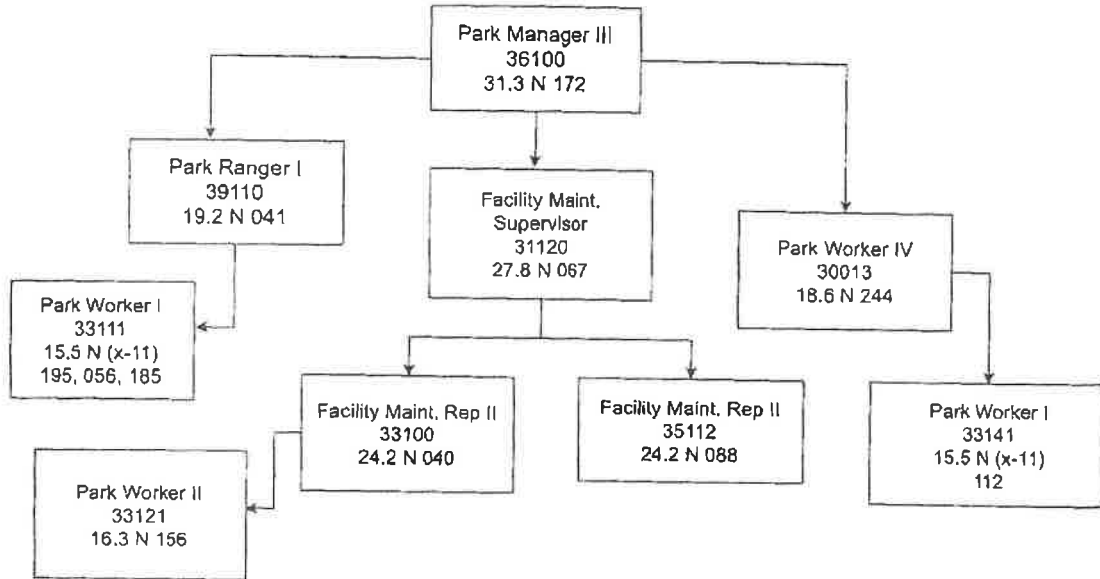


Pat HARRISON WATERWAY DISTRICT
ORGANIZATIONAL CHART
FY2022
PROPOSED

Agency: 90480
05/27/2021
FY2022
Page 6 of 12

Kevin Brown
Agency Authorized Signature

Okatibbee

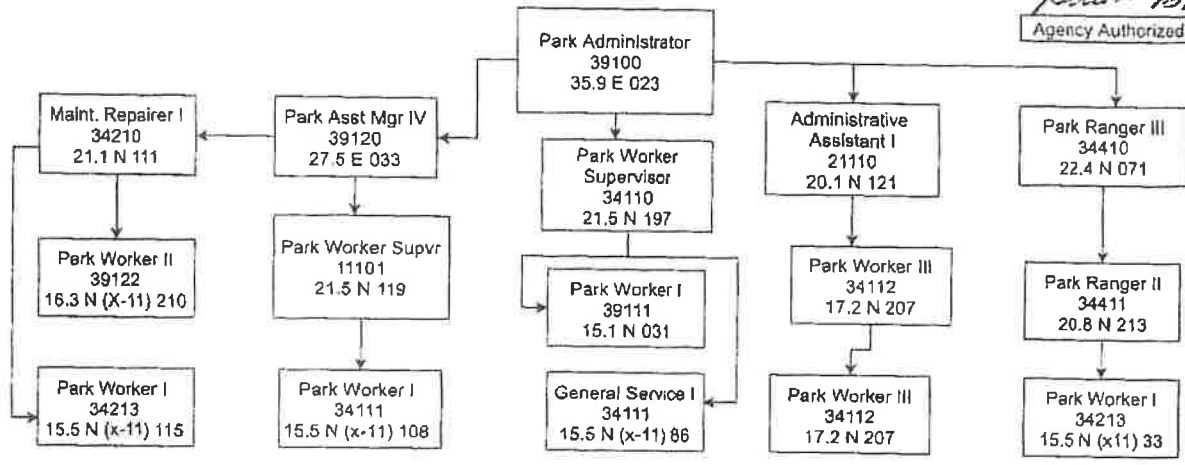


Pat HARRISON WATERWAY DISTRICT
 ORGANIZATIONAL CHART
 FY2022
 PROPOSED

Agency: 90480
 05/27/2021
 FY2022
 Page 7 of 12

Flint Creek

Heidi Brown
 Agency Authorized Signature

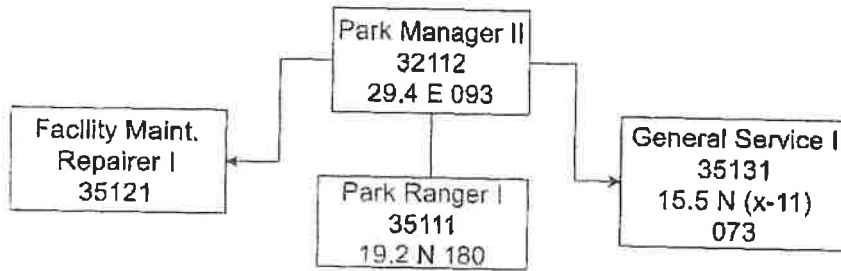


Pat HARRISON WATERWAY DISTRICT
ORGANIZATIONAL CHART
FY2022
PROPOSED

Agency: 90480
05/27/2021
FY2022
Page 8 of 12

Big Creek

Harrison
Agency Authorized Signature

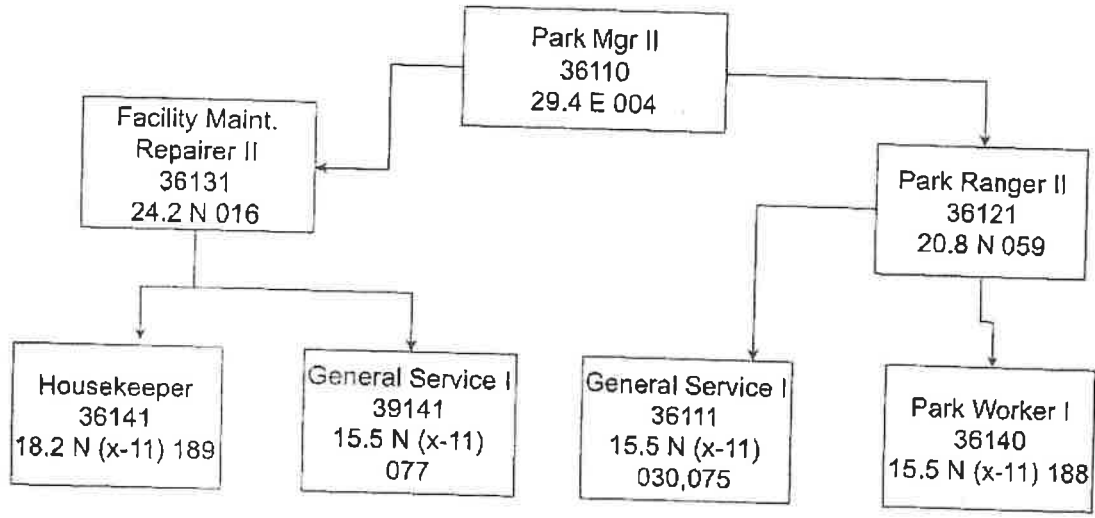


Pat HARRISON WATERWAY DISTRICT
ORGANIZATIONAL CHART
FY2022
PROPOSED

Agency: 90480
05/27/2021
FY2022
Page 9 of 12

Maynor Creek

Helen Brown
Agency Authorized Signature

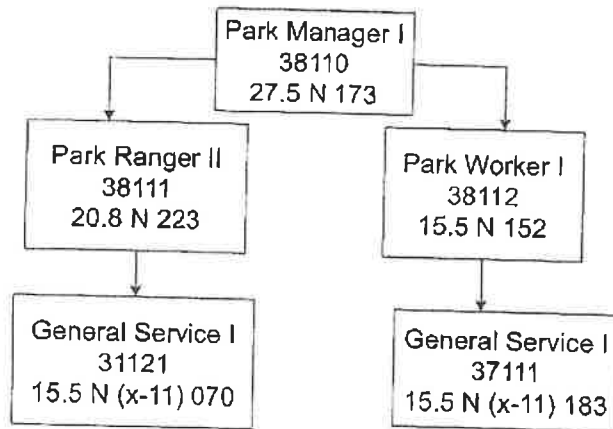


Pat HARRISON WATERWAY DISTRICT
ORGANIZATIONAL CHART
FY2022
PROPOSED

Agency: 90480
05/27/2021
FY2022
Page 10 of 12

Turkey Creek

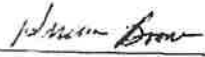
Heidi Brown
Agency Authorized Signature

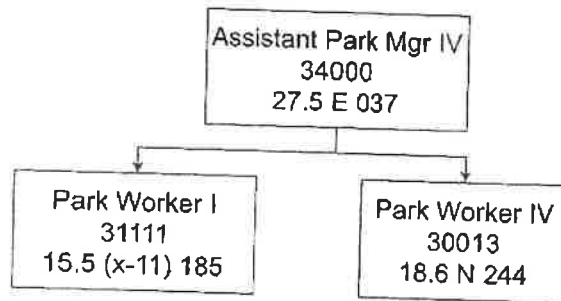


Pat HARRISON WATERWAY DISTRICT
ORGANIZATIONAL CHART
FY2022
PROPOSED

Agency: 90480
05/27/2021
FY2022
Page 11 of 12

Dunn's Falls


Agency Authorized Signature



Pat HARRISON WATERWAY DISTRICT
ORGANIZATIONAL CHART
FY2022
PROPOSED

Agency: 90480
07/22/2020
FY2022
Page 12 of 12

Little Black Creek


Agency Authorized Signature

No Pins Assigned to this park
Leased to individual

